



April 1997

EMBARGO: 11:30 AM (CANBERRA TIME) FRI 4 APR 1997

South Australian Economic Indicators



ABS Catalogue No. 1307.4

South Australian Economic Indicators

ABS Catalogue No. 1307.4

ABS PUBLICATIONS, SOUTH AUSTRALIA

Cat. No.	Publication	Latest issue	Date of issue
GENERAL			
1202.4	Information Paper : Guidelines for the Development of Community Surveys <i>irr</i>		14 Nov. 1985
1301.4	South Australian Year Book <i>a</i> (\$35.00)		18 Dec. 1995
1302.4	Pocket Year Book of South Australia <i>a</i> (\$8.50)	1997	1 May 1995
1304.4	Local Government Area Statistics <i>irr</i> (\$20.00)	1995	30 July 1993
1306.4	South Australia at a Glance <i>a</i>	1996	1 May 1996
1307.4	South Australian Economic Indicators <i>m</i> (\$17.50)	Mar. 1997	28 Feb. 1997
1352.4	Sales of Goods and Services by Businesses Involved in Water Related Activity in South Australia <i>irr</i> (\$13.00)	1994-95	7 Dec. 1995
POPULATION AND VITAL STATISTICS			
2840.4	Adelaide, a Social Atlas <i>irr</i> (\$45.00)	Census 1991	31 Mar. 1993
2841.4	Aboriginal People in South Australia <i>irr</i> (\$15.00)	Census 1991	11 Feb. 1994
3201.4	Estimated Resident Population in Statistical Local Areas, Preliminary <i>a</i> (\$13.50)	30 June 1996	31 Jan. 1997
3202.4	Estimated Resident Population in Statistical Local Areas <i>irr</i> (\$10.00)	June 1986 to 1991	28 Oct. 1993
3204.4	Estimated Resident Population by Age and Sex in Statistical Local Areas <i>a</i> (\$14.50)	30 June 1995	25 Mar. 1996
3311.4	Demography <i>a</i> (\$18.00)	1994	8 Mar. 1996
SOCIAL STATISTICS			
4104.4	Aboriginal Births and Deaths, Review of Data Quality and Statistical Summary <i>irr</i> (\$9.50)	1988	16 Mar. 1990
4175.4	Participation in Sporting and Physical Recreational Activities <i>irr</i> (\$14.50)	Oct. 1995	21 Dec. 1995
4190.4	National Aboriginal and Torres Strait Islander Survey <i>irr</i> (\$17.00)	1994	17 Sept. 1996
4195.4	Aboriginal and Torres Strait Islander People at a Glance <i>irr</i> (\$1.00)	1994	27 Sept. 1996
4402.4	Community and Volunteer Work <i>irr</i> (\$7.50)	Oct. 1988	4 Aug. 1989
4509.4	Crime and Safety <i>irr</i> (\$11.50)	Apr. 1995	31 Aug. 1995
PUBLIC FINANCE			
5502.4	Local Government Finance <i>a</i> (\$10.70)	1991-92	21 May 1993
5503.4	State and Local Authorities Finance <i>a</i> (\$13.30)	1991-92	2 July 1993
LABOUR FORCE AND EMPLOYMENT CONDITIONS			
6204.4	Womens Work <i>irr</i> (\$3.00)	July 1992	23 July 1992
6215.4	Women's Employment Patterns, Adelaide Statistical Division <i>irr</i> (\$10.00)	Nov. 1992	17 Feb. 1993
6301.4	Work Related Injuries and Illnesses <i>irr</i> (\$13.50)	Oct. 1996	23 Dec. 1996
RURAL			
7111.4	Principal Agricultural Commodities, Preliminary <i>a</i> (\$13.50)	1995-96	11 Sept. 1996
7113.4	Agriculture <i>a</i> (\$16.50)	1994-95	15 July 1996
MANUFACTURING			
8221.4	Manufacturing Industry <i>a</i> (\$17.00)	1993-94	12 Dec. 1996
INTERNAL TRADE			
8623.4	Retailing in South Australia <i>irr</i> (\$15.00)	1991-92	21 Jan. 1994
8635.4	Tourist Accommodation <i>q</i> (\$15.50)	Dec. qtr 1996	14 Mar. 1997
BUILDING			
8731.4	Building Approvals <i>m</i> (\$14.00)	Jan. 1997	4 Mar. 1997
8741.4	Dwelling Unit Commencements Reported by Approving Authorities <i>m</i> (\$13.00)	Sept. 1996	19 Mar. 1997
8752.4	Building Activity <i>q</i> (\$14.00)	Sept. qtr 1996	28 Jan. 1997
TRANSPORT			
9203.4	Drivers and Passengers . Travel to Work, Adelaide Statistical Division <i>irr</i> (\$10.00)	Oct. 1993	14 Dec. 1993

SOUTH AUSTRALIAN ECONOMIC INDICATORS

April 1997

**P.M. GARDNER
Regional Director**

AUSTRALIAN BUREAU OF STATISTICS

CATALOGUE NO. 1307.4

© Commonwealth of Australia 1997

Produced by the Australian Government Publishing Service

PREFACE

South Australian Economic Indicators is a monthly publication which contains the latest available data at the time of preparation for a range of statistical series that have been identified as indicators of economic activity in this State. In a number of cases the figures presented are preliminary and subject to revision in subsequent issues.

Written and graphic commentary have been included for many of the selected series and analysis has been augmented with the calculation of the percentage change from the previous reference period together with the presentation of comparative Australian data.

Time series information has been included to provide a historical perspective on many of the selected indicators. Future issues may be expanded to include further historical data in response to expressed user needs. This product is under continuous review and any suggestions for enhancement will be welcomed.

More detailed information on each series, including explanatory and technical notes, can be obtained from other Australian Bureau of Statistics publications or alternative data sources. To assist those seeking further information a source publication for each of the series has been documented in the statistical summary.

If you have any inquiries concerning this publication please contact the editor, John Callinan, telephone (08) 8237 7307. All requests for statistical information should be directed to the ABS Information Service, GPO Box 2272, Adelaide SA 5001, telephone (08) 8237 7100.

P.M. GARDNER
Regional Director

Australian Bureau of Statistics
Adelaide
March 1997



CONTENTS

	Page
Preface	iii
REVIEW	2
Overview	
State accounts	
International accounts	
Consumption and investment	
Production	
Prices	
Labour force and demography	
Incomes	
Financial markets	
Forward outlook	
STATISTICAL SUMMARY	20
State accounts	
International accounts	
Consumption and investment	
Production	
Prices	
Labour force and demography	
Incomes	
Financial markets	
TIME SERIES	
State accounts - current prices	22
State accounts - average 1989-90 prices	23
Merchandise exports by commodity group	24
Merchandise exports by country	24
Merchandise exports by industry of origin	25
Merchandise imports by commodity group	25
Turnover of retail establishments by industry	26
New motor vehicle registrations by type of vehicle	27
Actual private new capital expenditure by selected industry and type of asset	28
Tourist accommodation	29
Building approvals	30
Building commencements	31
Value of building work done during period	31
Production, livestock and selected commodities	32
Consumer price index, by group	34
Average retail prices of selected consumer items	35
Estimated resident population and components of population change	35
Labour force - numbers	36
Labour force - rates	37
Labour force - area	38
Average weekly earnings of employees	40
Finance commitments	41
For more information	42

REVIEW

South Australian Overview

- The value of merchandise exports where the final stage of production was in South Australia were \$371.3 million in January 1997, whilst imports released from customs control in South Australia were \$300.4 million.
- The trend estimate of retail turnover has increased 0.1% in January 1997 after a six month period of decline.
- The January 1997 trend estimate for new motor vehicle registrations increased 2.1% and continues the growth shown in this series in the past four months.
- The trend estimate for private new capital expenditure in South Australia for the December quarter 1996 increased by 5.4% from the previous quarter and is a continuation of trend growth which commenced in December quarter 1995.
- The room occupancy rate of 54.9% for hotels, motels and guesthouses in December quarter 1996 was the highest December quarter result recorded since 1986.
- The trend estimate for total dwelling units building approved has fallen for the last three months and is now 6.5% below the recent peak in October 1996.
- The value of non-residential building approved was \$41.9 million in January 1997.
- The Price Index of Materials used in House Building increased by 0.1% in January 1997 whilst the index for Materials used in Building other than House Building increased by 0.2% when compared with December 1996.
- During the December quarter 1996 the Price Index of Established Houses in Adelaide decreased 1.0% and the Project Home Index decreased 3.6%.
- The trend unemployment rate for South Australia has generally remained flat over the last 12 months. The estimate for February 1997 was 9.4%.
- There were 1,100 working days lost through industrial disputes in South Australia during December 1996.
- The trend estimate of average weekly ordinary time earnings of full-time adult employees in South Australia increased by 0.4% for the three months to November 1996.
- In the 12 months to January 1997, the weekly award rates of pay index for full-time employees in South Australia increased by 1.3%.
- The trend estimate for the value of owner-occupied housing commitments continued the upward climb, but at a slower rate with January rising 0.6% to \$258.4 million.

State Accounts

NOTE: Deficiencies in the data sources used to estimate gross operating surplus for recent quarters may at times lead to the current price estimates of gross state product GSP(I) being under or over stated for particular States. Consequently, the measured growth rate for constant price GSP(I) for those States will also be affected.

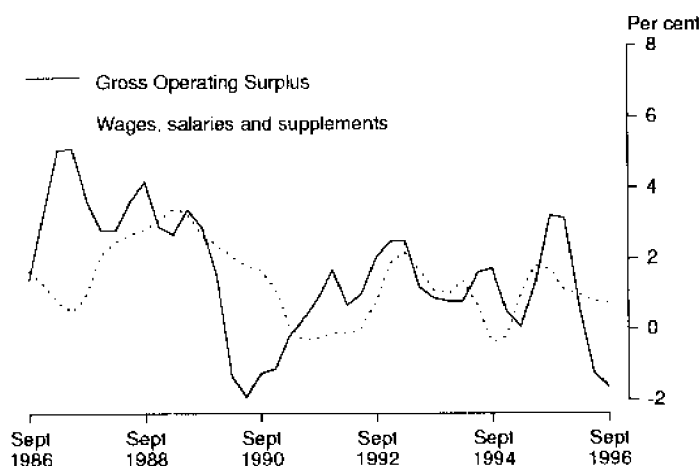
The constant price series for gross state product (GSP) have been labelled as 'experimental'. Users are cautioned that these estimates are derived indirectly by calculating a deflator from the expenditure components. It is emphasised that, at times, movements that can not be fully explained may be introduced into the constant price GSP(I) series through the use of this proxy deflator.

Trend Estimates (Current Prices)

Gross state product (GSP) contracted by 0.3% in the September quarter compared with a 0.5% increase in the national average. Since peaking at 2.4% in the September quarter 1995, the growth in GSP has declined steadily. The annual growth rate of 2.4% was the lowest of all States.

The most significant factor contributing to the September quarter decline in GSP was a 1.6% decline in gross operating surplus. The annual growth rate of 0.8% was the lowest of all States.

**WAGES, SALARIES AND SUPPLEMENTS AND
GROSS OPERATING SURPLUS
CURRENT PRICES - TREND
Quarterly Changes**



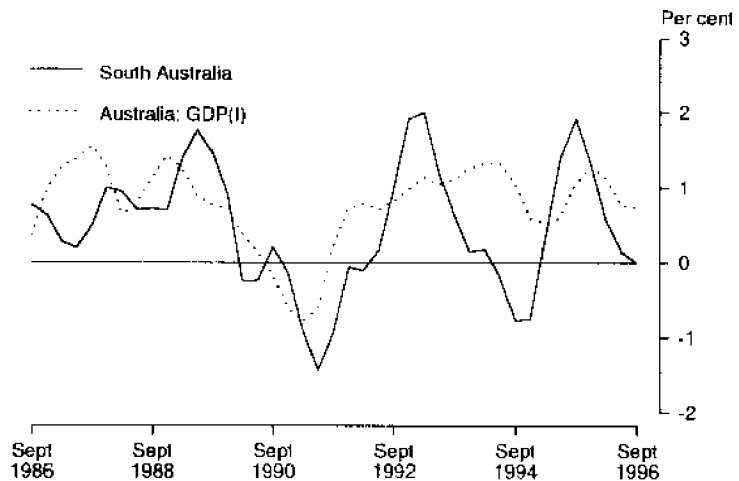
The rate of growth in wages, salaries and supplements has declined for the last 5 quarters, increasing by 0.7% in the September quarter.

No growth was recorded for indirect taxes less subsidies over the latest two quarters.

Trend Estimates (Constant Prices)

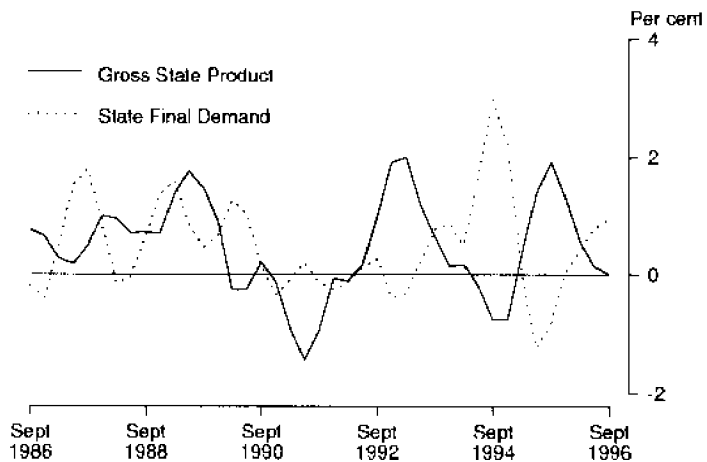
The experimental estimate of GSP at constant prices remained flat in the September quarter but increased by 2.0% through the year to September quarter 1996.

**GROSS STATE PRODUCT - TREND
(CONSTANT PRICES)
Quarterly Changes**



State final demand (SFD) increased by 1.0% in the September quarter and has, for the past two quarters, grown at a faster rate than GSP. September quarter growth in SFD was the highest of all States and was due mainly to a 7.3% increase in private gross fixed capital expenditure, in particular expenditure on equipment. Expenditure on dwellings fell for the eighth consecutive quarter.

**GROSS STATE PRODUCT AND
STATE FINAL DEMAND - TREND
(CONSTANT PRICES)
Quarterly Changes**



There was an increase of 0.3% in private final consumption expenditure in the September quarter. The increase of 1.4% through the year to September quarter 1996 was the lowest growth rate of any State.

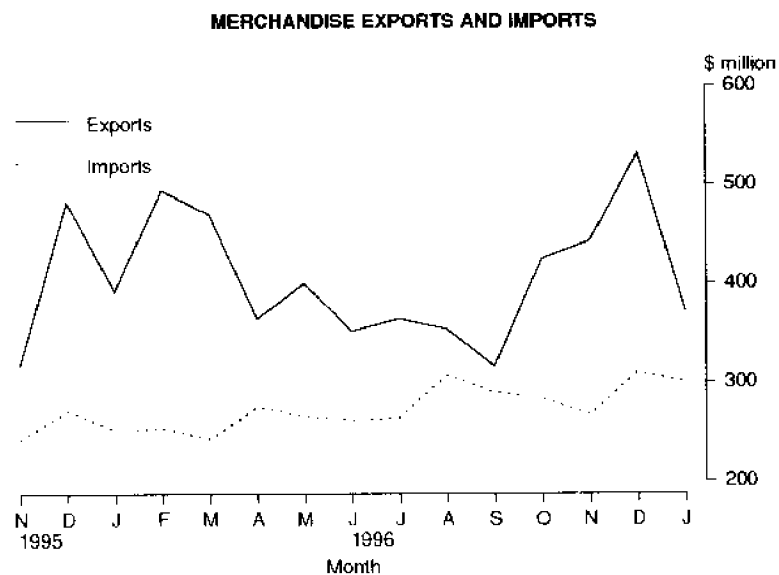
International Accounts

Exports

The January 1997 merchandise exports where the final stage of production was in South Australia were valued at \$371.3 million, a decrease of 30.2% on the previous month and 5.5% on January 1996. A decrease was recorded in most categories with cereals and cereal preparations and fish and crustaceans the only commodities to show an increase on the previous month.

The major commodity groups exported during January 1997 were cereal and cereal preparations valued at \$108.1 million up from \$85.2 million last month and road vehicles, parts and accessories with \$46.7 million down from \$70.1 million.

The major destinations of South Australian exports in January 1997 were the Middle East \$83.8 million, United States \$46.6 million and New Zealand \$32.0 million.



Imports

The value of merchandise imports released from Customs control in South Australia for January 1997 was \$300.4 million, a 3.2% decrease on the previous month and a 19.1% increase on January 1996. The decreases mainly occurred in food, beverages and tobacco down \$3.8 million to \$10.0 million, petroleum and petroleum products down \$22.5 million to \$25.0 million and other manufactured goods down \$30.0 million to \$52.4 million. These decreases were partly off set by increases in the importation of machinery up \$31.5 million to \$107.4 million, a record monthly figure and road vehicles parts and accessories up \$9.1 million to \$42.2 million.

Consumption and Investment

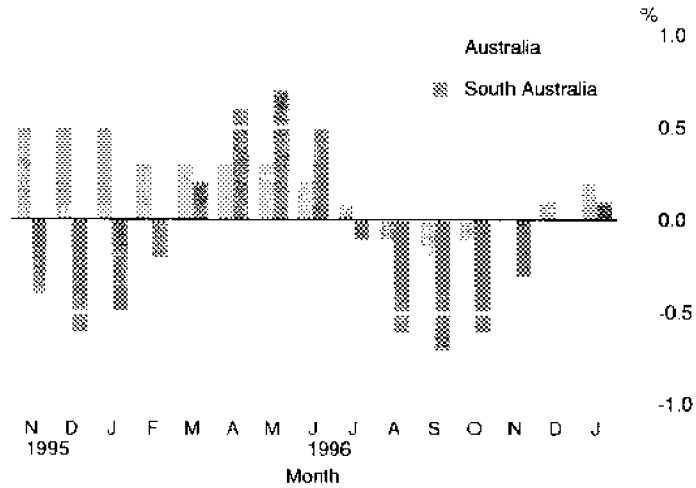
Retail Turnover

The January 1997 trend estimate of retail turnover recorded a 0.1% increase on December 1996 and follows a six month period of decline. Clothing and soft good, other retailing and hospitality and services were the main contributors to growth in this period. The Australian trend estimate recorded a 0.2% increase in January which followed a 0.1% increase in December 1996.

Over the past three months the trend estimate for South Australia fell by \$1.3 million caused by decreases of \$5.0 million in household good retailing, and \$1.1 million in recreational good retailing but was partly offset by increases of \$3.5 million in food retailing and \$0.9 million in clothing and soft good retailing.

The seasonally adjusted estimate of retail trade in January 1997 increased 1.8%. In original terms, South Australian retail turnover was \$752.4 million, an increase of 3.9% on January 1996.

RETAIL TURNOVER
PERCENTAGE CHANGE FROM PREVIOUS MONTH
Trend Estimates

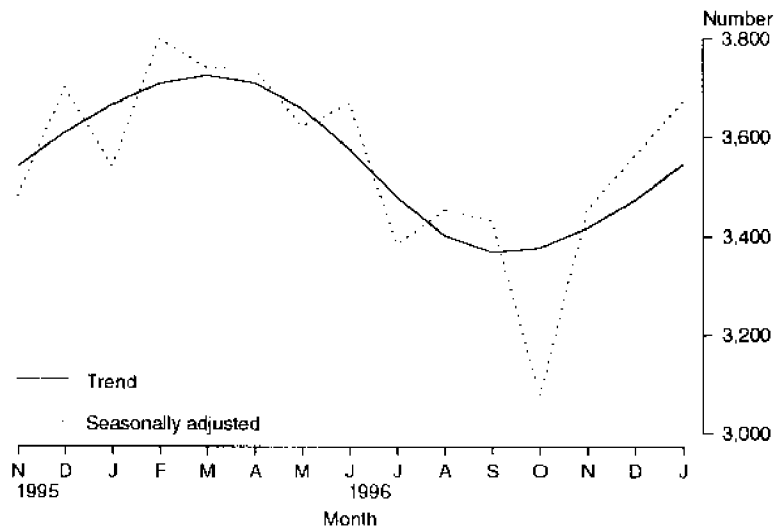


New Motor Vehicle Registrations

The trend for total new motor vehicle registrations in January 1997 increased 2.1% over December 1996 and was the fourth consecutive rise following six months of decline. The Australian figure for the same period increased 1.4%.

In original terms there were 2,942 new motor vehicles registered in January 1997, a fall of 17.9% from December 1996 and an increase of 4.0% from January 1996. For new passenger vehicles, the leading makes registered in January 1997 were Mitsubishi (467 vehicles), Holden (452), Ford (446), Toyota (269) and Hyundai (252).

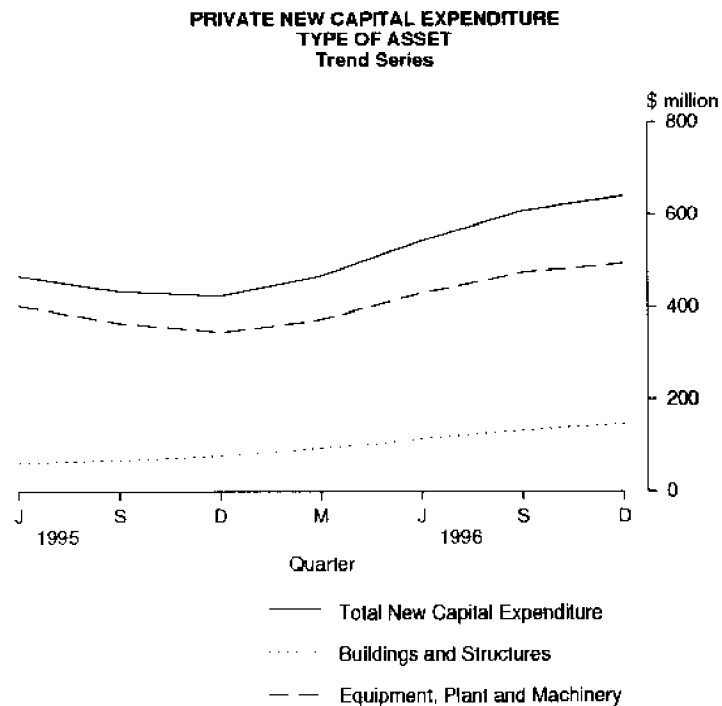
NEW MOTOR VEHICLE REGISTRATIONS



Private New Capital Expenditure

The trend estimate for private new capital expenditure in South Australia for the December quarter 1996 increased by 5.4% from the previous quarter and is a continuation of trend growth which commenced in December quarter 1995. The Australian figure fell by 0.3%.

Private new capital expenditure in original terms for the December quarter 1996 was \$658 million, an increase of 4.4% from the September quarter 1996. Buildings and structures accounted for \$165 million, and equipment, plant and machinery \$493 million.



Information on expected capital expenditure data is contained in the Forward Outlook on pages 17 and 18.

Tourist Accommodation

When December quarter 1996 is compared with December quarter 1995, number of rooms available in hotels, motels and guesthouses in South Australia increased from 10,763 to 10,951 while bed spaces increased from 30,537 to 31,266. Room nights occupied rose by 5.5% resulting in an occupancy rate of 54.9%. Takings from accommodation increased by 0.6% from \$43.0 million to \$43.3 million however the average takings per room night occupied fell from \$82 to \$78. This resulted from a substantial fall in the average takings per room night occupied for the Adelaide Statistical Division in the month of November 1996 which coincided with the loss of the Adelaide Grand Prix.

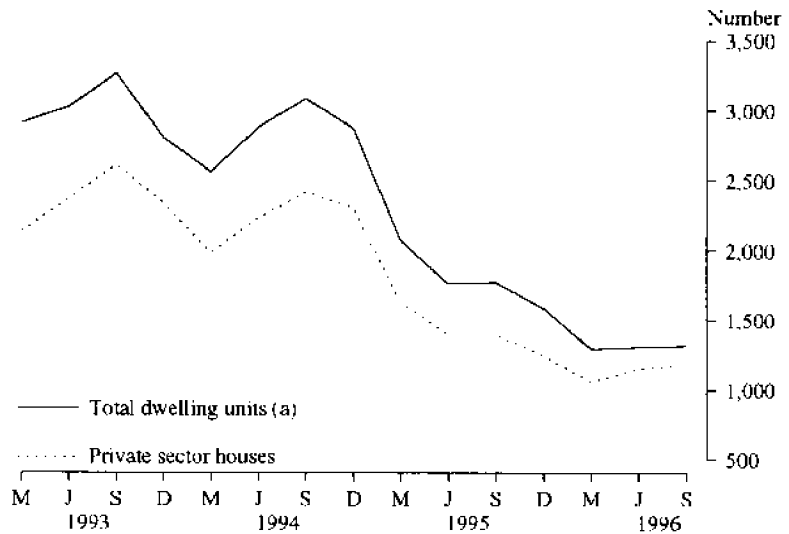
Production

Dwelling Approvals

The January 1997 trend for total dwelling units approved has fallen for the last 3 months and is now 6.5% below the recent peak in October 1996. The trend estimate for total dwellings is 3.3% below the December estimate. In original terms, the number of dwelling unit approvals continued to decline, falling by 14.4% to 351 from the previous month. The number of dwelling units approved for January (351) is comparable to that of a year earlier (355).

The national trend estimate for the total number of dwelling units approved in January 1997 (11,430) was 1.3% higher than the trend estimate for December 1996 and 12.3% higher than January 1996. In original terms, South Australia accounted for 3.5% of the total dwelling units approved in Australia during January 1997.

DWELLING UNITS COMMENCED

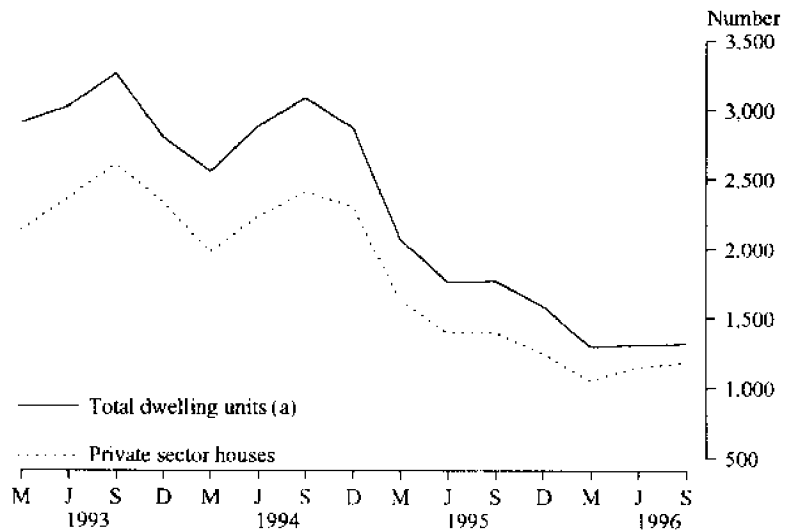


(a) Includes Conversions, etc.

Dwelling Commencements

From the Building Activity Survey, it was estimated that 1,498 dwelling units were commenced during the December quarter 1996, a rise of 13.4% from the previous quarter. This compares with a 2.9% increase nationally. The December quarter figure for South Australia was 5.6% below that total of a year earlier, while the national figure increased 2.2% over the 12 month period.

DWELLING UNITS COMMENCED



(a) Includes Conversions, etc.

Value of Building Approvals

The value of new residential building approved declined to \$29.6 million for January 1997.

The value of non-residential building increased by 49.6% in January to \$41.9 million. Of the total value of non-residential building for January 1997, the public sector contributed \$30.6 million, including \$16.2 million in the entertainment and recreational and \$11.7 million in the educational categories.

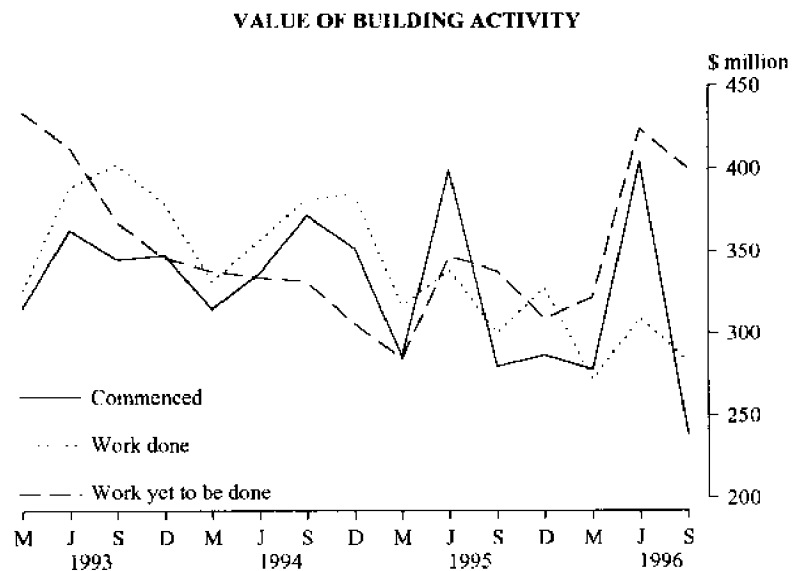
Overall for January 1997, the value of all buildings approved increased by 10.5% from the previous month to \$80.1 million.

Value of Total Building Activity

The total value of building work commenced in South Australia during the September quarter 1996 fell by 41.0% to \$238.4 million from the previous quarters high of \$403.9 million. This fall can be mostly attributed to a 60.9% fall in the non-residential building sector, in particular, the shops, other business premises and entertainment and recreational categories which had recorded substantial increases last quarter. This is the lowest value for building work commenced in South Australia in over ten years.

The total value of building work done during the September quarter 1996 fell by 8.2% to \$283.2 million compared with a 3.9% increase nationally. Compared with the September quarter 1995, South Australia had a 5.5% fall in the value of total building work done which was comparable with the national movement of a 4.9% fall.

The total value of building work yet to be done in South Australia was \$400.1 million at the end of September quarter 1996, a fall of 5.5% from the previous quarter while the corresponding national figure increased by 2.1% to \$9,530.6 million. Expressed as a proportion of the national total, the total value of building work yet to be done in South Australia was 4.2% for the September quarter 1996.



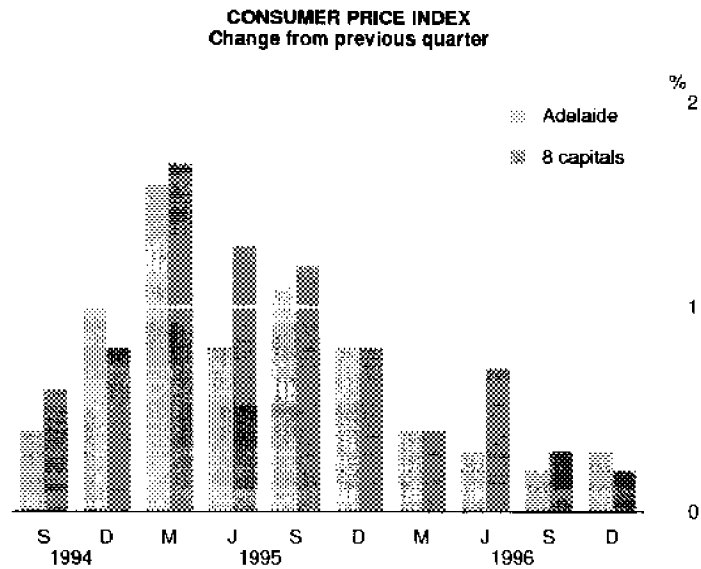
Value of Engineering Construction

In South Australia, the value of engineering construction work done for the September quarter 1996 was down 38.5% to \$139.1 million compared with a 9.8% fall nationally. South Australia had a 3.7% share of the national total of \$3,719.3 million. The value of work commenced during the quarter for South Australia rose 25.9% to \$247.9 million as did the corresponding national figure increasing by 33.6% to \$4,382.1 million. The State's proportion of national commencements was 5.7% for the September quarter 1996.

Prices

Consumer Price Index

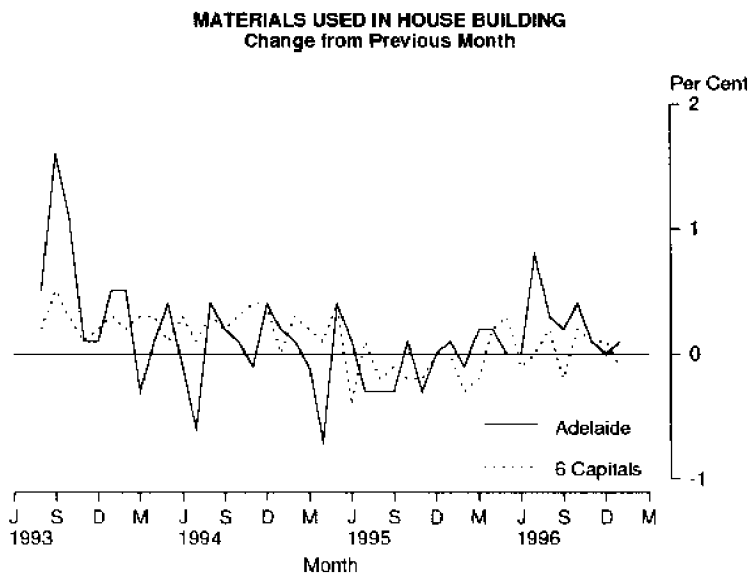
The Consumer Price Index (all groups) in Adelaide rose 0.3% in the December quarter. The annual increase of 1.2% was the lowest recorded since September 1968. The comparative Australian data shows a 0.2% increase for the December quarter 1996, the lowest quarterly change since December 1993 and an annual increase of 1.5%, the lowest annual change since the March quarter 1994.



House Building Materials

Adelaide recorded a rise of 0.1% for the month of January in the Price Index of Materials used in House Building, the rise being attributed to an increase in installed appliances and cupboards. The weighted average of the six State capitals fell by 0.1% for the month.

For the twelve months to January, the Index has risen 2.1% for Adelaide, while the weighted average of the six State capitals only rose 0.2% for the same period.

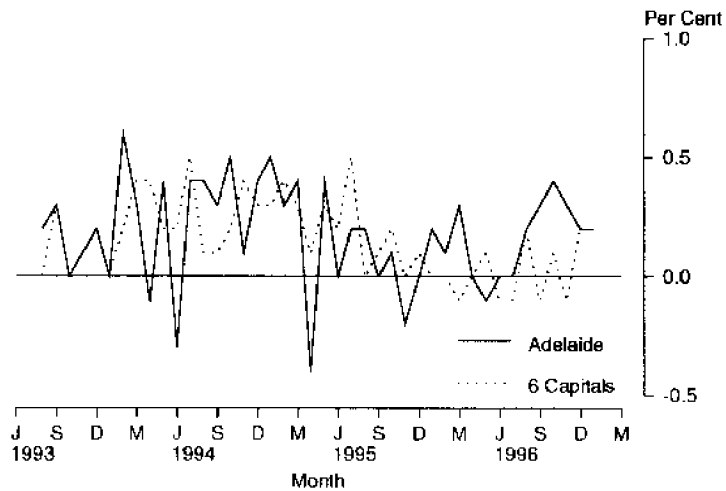


Non-house Building Materials

For the month of January, Adelaide recorded a rise of 0.2% in the Price Index of Materials used in Building other than House Building. A rise in the price of electrical materials was the main reason for the rise. For the same period, the weighted average of the six State capitals also rose 0.2%.

A rise of 1.7% for the twelve months ended January was recorded in Adelaide, while for the same period, a rise of 0.3% was recorded for the weighted average of the six State capitals.

**MATERIALS USED IN BUILDING
OTHER THAN HOUSE BUILDING
Change from Previous Month**



House Prices

During the December quarter 1996 the Price Index of Established Houses in Adelaide decreased 1.0% and the Project Home Index decreased 3.6%. The weighted average of the eight capital cities index, over the same period showed a 0.3% increase for established houses and a 0.3% decrease for project houses.

Between December quarter of 1995 and 1996 the Price Index for Established Houses in Adelaide decreased by 0.7% and project homes by 4.8%. Nationally, for the 12 month period established house prices recorded a 1.7% increase and project homes decreased by 0.3%.

Passenger Transport Costs

The passenger transport cost index measures changes in the costs of operating a public transport passenger bus service in Adelaide. Costs covered include labour costs, leasing charges, registration and insurance, repairs and maintenance, fuel and overheads. The index has been compiled on a quarterly basis from September 1995 with a base of 100.0 in 1993-94. The December quarter 1996 index was 107.8, up 3.6% from 104.1 in September 1996. The index showed a 2.8% increase in the 12 months to December 1996.

Labour Force and Demography

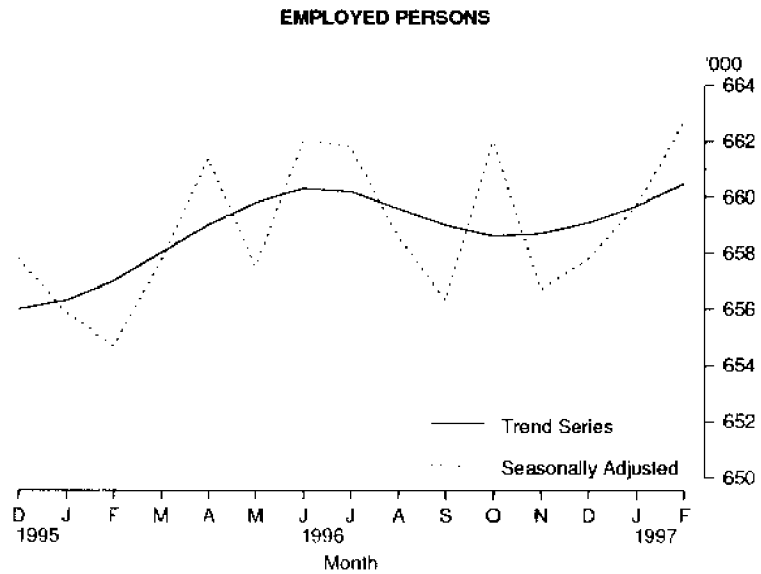
Population

At 30 June 1996 the estimated resident population of South Australia was 1,479,147. This was an increase of 0.1% (1,417) persons from the March quarter. The continuing low growth rate for South Australia is attributable to a net outflow in interstate migration of 1,093 persons which was partly offset by a net inflow of overseas migration of 697 persons. In the June quarter there was a natural increase of 1,813 persons and 1,596 in the September quarter 1996.

Employment

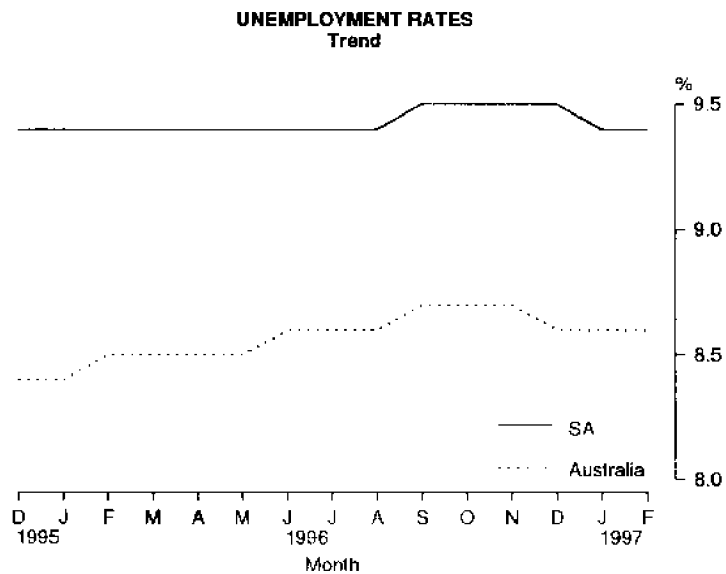
At February 1997, the trend estimate of employed persons in South Australia was 660,500, up slightly from the level recorded in February 1996 (657,000).

The trend estimate of employed persons in Australia rose to 8,418,800 in February 1997, thus continuing the growth of recent months.



Unemployment

The trend unemployment rate for South Australia has generally remained flat over the last 12 months. The estimate for February 1997 was 9.4%.



After reaching a peak of 8.7% in September 1996, the trend estimate of the employment rate for Australia was 8.6% in February 1997.

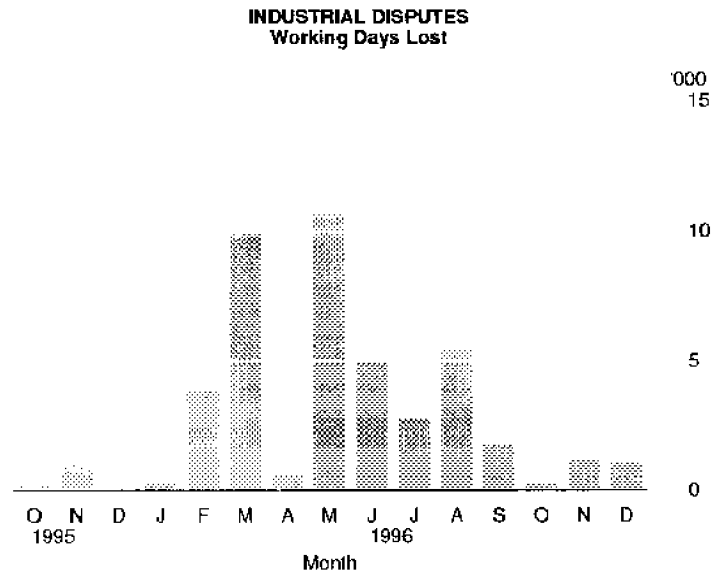
Overtime

In original terms, the proportion of employees who worked overtime in South Australia in November 1996 was 15.0%. This was higher than the November 1995 level of 14.3%. For Australia, the corresponding proportions were 15.9% and 16.6% for November 1996 and November 1995 respectively.

In November 1996, employees who worked overtime in South Australia recorded an average of 6.4 overtime hours per week. This was lower than the corresponding national level of 7.2 hours.

Industrial Disputes

There were 1,100 working days lost through industrial disputes in South Australia during December 1996. At 4.0% of the national total (27,200 working days lost), South Australia experienced a relatively low level of industrial disputation.

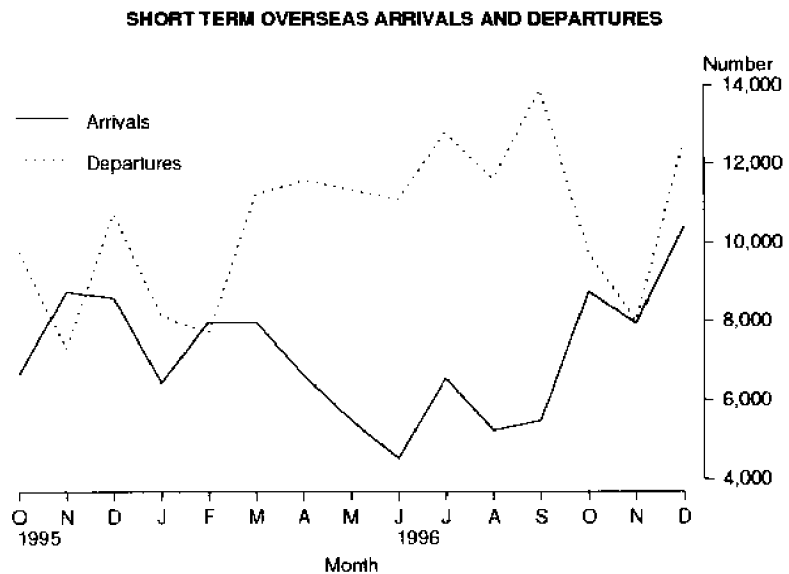


Short term Overseas Visitor Arrivals

In December 1996, there were 10,411 short term overseas visitor arrivals to South Australia. This is the highest monthly figure recorded in recent years, representing a 31.0% increase from November (7,947) and a 21.4% rise from December 1995 (8,574). Similar growth (23.9%) was recorded for Australia (from 375,565 in November to 465,176 in December). The South Australian share of the Australian short term overseas visitor market increased only slightly from 2.1% in the previous month to 2.2% in December.

Short term Resident Departures

There were 12,552 resident short term departures from South Australia in December. This represents a 57.1% increase in the number of resident departures from November (7,988), and is 16.7% higher than for the same month last year (10,760). These figures reflect the increase of resident departures from Australia as a whole for December (294,952 departures up 35.2% from 218,200 in November).



Incomes

Average Weekly Earnings

The trend estimate of average weekly ordinary time earnings of full-time adult employees in South Australia increased by 0.4% for the three months to November 1996. Male full-time ordinary time earnings decreased by 0.1% in November 1996 whilst over the same period female full-time adults ordinary time earnings increased by 1.5%.

In the twelve months to November 1996 the trend estimate of average weekly ordinary time earnings of full time adults increased by 3.3%. This compares with a 4.3% increase for full-time adult total earnings.

Note: Since it is an average of earnings across all employees, changes in average weekly earnings may occur through changes in employment as well as changes in pay levels.

Award Rates of Pay

In the 12 months to January 1997, the weekly award rates of pay index for full-time employees in South Australia increased by 1.3%.

For full-time adult male employees in South Australia, the largest annual movement of the index occurred in the manufacturing industry division, with an increase of 1.8%.

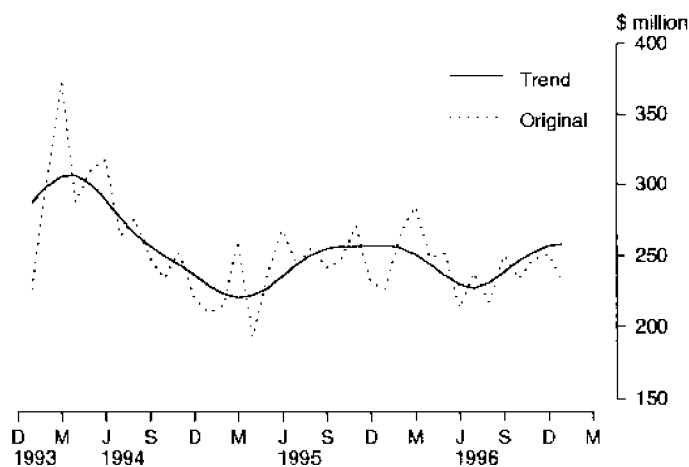
For full-time adult female employees, the largest annual movement of the index occurred in public administration and defence with an increase of 2.4%.

Financial Markets

Housing Finance

The trend estimate for the value of owner-occupied housing commitments continued the upward climb, but at a slower rate with January rising 0.6% to \$258.4 million, 0.3% above January 1996. The national trend increased 1.6% for the month, 15.1% above the previous January.

**SECURED HOUSING FINANCE COMMITMENTS
TO INDIVIDUALS (ALL LENDERS)
(Excluding Alterations and Additions)
Monthly Total**



Total housing finance commitments (original figures including alterations and additions) decreased in January by 7.0% to \$246.1 million, marginally above January 1996. All categories were down apart from commitments for alterations and additions.

Commitments for the purchase of established houses (the largest category) was down by 10.0% to \$144.9 million. Construction of dwellings decreased 2.7% to \$29.7 million (which represented 6.3% of the national total) but was 38.3% above the previous January. Commitments for newly erected dwellings decreased 17.0% to \$9.2 million. Refinancing was down 3.9% to \$47.0 million from the \$13.1 million recorded in December 1996.

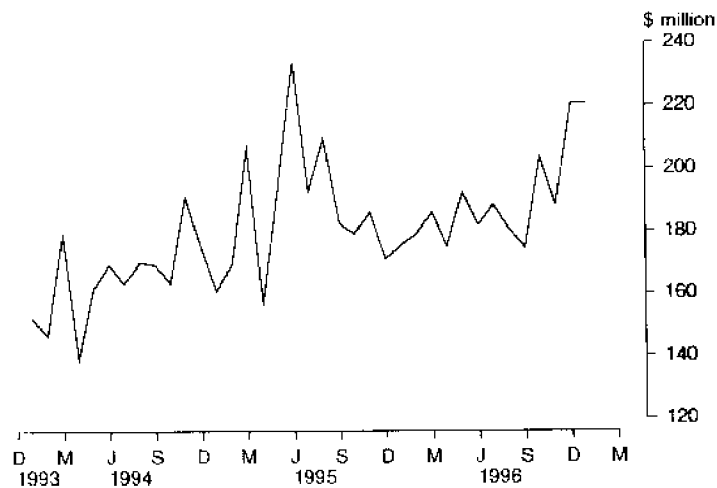
Alterations and additions increased 17.5% to \$15.3 million following the lowest month since July 1993.

Personal Finance

Total commitments for January remained static at \$221.0 million, but still 25.8% above the previous January. The national total decreased marginally during the month but was 7.6% above January 1996. The South Australian commitments for the month were 8.0% of the national total.

Fixed loan commitments increased 8.8% to \$124.0 million, marginally below January 1996. The main category, finance for used motor vehicles and station wagons, was up 14.0% to \$38.8 million, 8% lower than the previous year, this represents 8.5% of the national total. New motor vehicles and station wagons, were up 11.3% to \$14.5 million, 26.9% higher than the previous year and now representing 6.4% of the national total. Significant increases were also recorded for debt consolidation, up 10.3% and refinancing, up 6.8%.

**PERSONAL FINANCE COMMITMENTS
(ALL LENDERS)
Monthly Total**



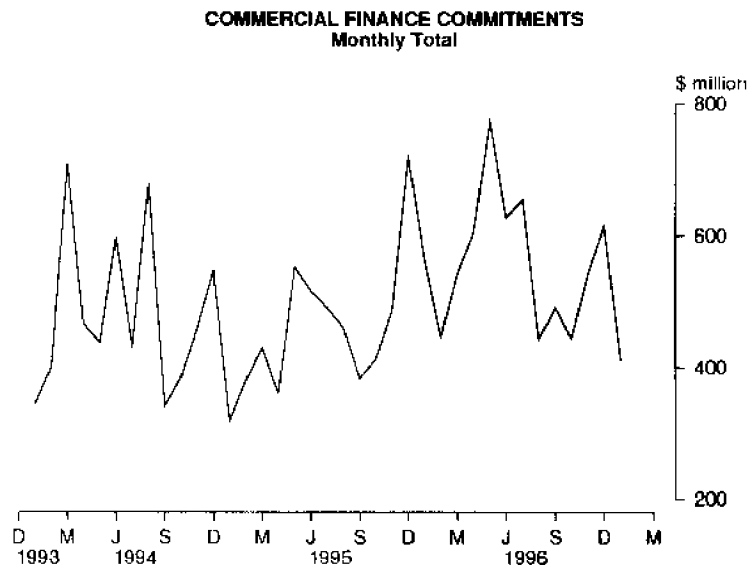
Revolving credit facilities decreased by 9.2% to \$96.9 million with secured revolving credit facilities falling by 15.7% to \$58.7 million from the very high December figure. Secured revolving credit facilities are still three times higher than the previous January. Unsecured rose 3% to be 18% higher than January 1996.

Commercial Finance

Total commercial finance commitments decreased 33.2% to \$411.2 million, 26.9% below January 1996. This was the lowest month since September 1995 and put South Australia's proportion of the national total down to 3.4%.

Commitments under fixed loan facilities decreased 27.5% to \$260.0 million, 2.6% above the previous January. The main decrease was for mining, down \$99.6 million to \$0.9 million, following an exceptionally high December. Finance, investment and insurance increased \$13.7 million to \$24.9 million following the low December figure.

Revolving credit facilities decreased 41.1% to \$151.2 million, 51.0% below January 1996. Big decreases were recorded for recreation, personal and other services, finance, investment and other services and construction after high December figures.



Lease Finance

The value of goods under new finance lease commitments decreased 28.6% to \$13.7 million, 5.2% higher than the previous January. South Australia's proportion of the national total is now down to 2.5%. Nationally the month was down 11.7% but 16.8% above the previous January.

Two of the main decreases were for new and used heavy trucks (down \$1.2 million and \$1.3 million respectively) following high increases in the previous month. The other major decrease was for new motor cars and station wagons not subject to depreciation (the largest category), 25.2% below December but 13.6% above the previous January. This category represented 2.9% of the Australian total in January.

Forward Outlook

Composite Leading Indicator

The Composite Leading Indicator (CLI) is a single time series produced by aggregating eight individual economic indicators, and has been developed by the ABS as an experimental series to supplement existing forms of economic analysis and modelling.

The CLI summarises the early signals contained in a selection of economic indicators and is designed to assist the detection of turning points between successive expansions and slow downs of economic activity as measured by constant price GDP(A). It does not attempt to forecast the level of economic activity.

In the December quarter 1996 :

- the experimental CLI rose 0.12%, following rises of 0.31% and 0.25% in the June and September quarters respectively.
- The last turning point in the deviation from its long-term trend for average Gross Domestic Product GDP (A) was a peak in the March quarter 1995. This peak was not predicted by the CLI as it is not well equipped to predict turning points driven predominantly by farm production as was the case in 1995-96.

Australian Business
Expectations

Surveys of business expectations have been available to decision makers for a number of years from several sources. These surveys provided *qualitative* indicators in the form of the net proportion of businesses expecting a rise or fall in future business conditions. Since the December quarter 1993, the ABS has been compiling a *quantitative* indicator of business expectations in the form of an expected weighted aggregate change in a range of economic variables. These data are available on a quarterly basis in *Australian Business Expectations* (5250.0).

**AUSTRALIAN BUSINESS EXPECTATIONS SOUTH AUSTRALIA AND AUSTRALIA
SALES OF GOODS AND SERVICES
EXPECTED PERCENTAGE AGGREGATE CHANGE**

Reference Period	Short term		Medium term	
	Expected aggregate change between		Expected aggregate change between	
	Sep. 1996 and Dec. 1996	Dec. 1996 and Mar. 1997	Dec. 1996 and Dec. 1997	Mar. 1996 and Mar. 1997
	%	%	%	%
South Australia	2.1	-0.1	4.3	3.6
Australia	1.6	0.4	3.1	4.1

Short term

Businesses in South Australia expect a decrease of 0.1% in sales of goods and services in the March quarter 1997 compared with the December quarter while the national expectation was a 0.4% increase.

Medium term

Businesses in South Australia expect sales of goods and services in the December quarter 1997 to be 4.3% above December quarter 1996. Australia wide the expectation was for 3.1% growth.

Expected New Capital
Expenditure

State estimates of actual new capital expenditure by private businesses in Australia are compiled each quarter. Details appear on pages 6, 20 and 28 of this publication.

Each December quarter businesses in the survey are asked for details of their longer term expectations for capital expenditure by State enabling estimates to be made for periods 6 months and 18 months ahead of the reference period. The collection of expectations in the December quarter survey also allows the derivation of a composite estimate (6 months actual plus 6 months expectations) for that financial year.

The following table shows the forward estimates made with the December 1996 collection.

**EXPECTED PRIVATE NEW CAPITAL EXPENDITURE
BY SELECTED INDUSTRY AND TYPE OF ASSET
SOUTH AUSTRALIA**

Selected industries and type of asset	6 months to June 1997	1996-97	1997-98
	\$m	\$m	\$m
Mining	140	280	228
Manufacturing	642	1 051	702
Other	502	1 240	857
Total expenditure	1 284	2 571	1 787
Buildings etc.	302	596	511
Equipment etc.	982	1 975	1 276

Once actual expenditure for a financial year is known, it is useful to investigate the relationship between previous expectations and the expenditure that was actually incurred. The resultant realisation ratios (subsequent actual expenditure divided by expected expenditure) then indicates how much expenditure was actually incurred against the amount expected to be incurred at various times of reporting.

Realisation ratios provide an important tool in understanding and interpreting statistics for future periods. The application of realisation ratios enables the adjustment of expectation data for known under (or over) realisation patterns in the past and hence provides a valid basis for comparison with other expectation data and actual expenditure estimates.

The following table shows the average realisation ratios over the past 4 years for both the composite estimate (6 months actual and 6 months expected) and the twelve month expectation from the December quarter surveys.

**RATIOS OF ACTUAL PRIVATE NEW CAPITAL EXPENDITURE TO EXPECTED PRIVATE NEW
CAPITAL EXPENDITURE BY SELECTED INDUSTRY AND TYPE OF ASSET - 4 YEAR
AVERAGES
SOUTH AUSTRALIA**

<i>Selected industries and type of asset</i>	<i>Composite estimate</i>	<i>12 month expectation</i>
Mining	0.88	1.18
Manufacturing	0.97	1.06
Other	0.98	1.58
Total expenditure	0.96	1.25
Buildings etc.	0.96	1.53
Equipment etc.	0.96	1.19



Statistical Consultancy

SURVEY DESIGN AND DATA ANALYSIS

- Survey design*
- Questionnaire development*
- Sample design*
- Data analysis*
- Statistical modelling*
- Tailored statistical training courses*

Statistical Service at its Best

Contact Gary Niedorfer on (08) 8237 7379

STATISTICAL SUMMARY

Indicator		Period	SOUTH AUSTRALIA			AUSTRALIA			SA as a % of Australia	Source index
			No.	% change from		No.	% change from			
				Previous period	Same period previous year		Previous period	Same period previous year		
State Accounts										
Gross domestic product (I)										
Current prices	\$m	Sep. 96 qtr	8,458	-2.2	3.0	123,107	0.6	5.5	6.9	1
1989-90 prices trend	\$m	Sep. 96 qtr	7,550	0.0	2.0	110,058	0.5	3.8	6.9	1
Wages, salaries and supplements										
Current prices trend	\$m	Sep. 96 qtr	4,420	0.7	3.7	62,388	1.6	6.4	7.1	1
Private final consumption expenditure										
Current prices	\$m	Sep. 96 qtr	5,816	1.6	2.2	77,875	1.9	4.6	7.5	1
1989-90 prices trend	\$m	Sep. 96 qtr	4,964	0.3	1.4	66,535	0.5	3.5	7.5	1
Private gross fixed capital expenditure										
1989-90 prices trend	\$m	Sep. 96 qtr	1,014	7.3	14.8	19,619	2.9	8.8	5.2	1
International Accounts										
Exports (excluding re-exports)	\$m	Jan. 97	371.3	-30.2	-5.5	5,754.7	-11.1	1.4	6.5	2
Imports	\$m	Jan. 97	300.4	-3.2	19.1	6,423.5	-4.0	-1.8	4.7	2
Consumption and Investment										
Retail Turnover										
Current prices original	\$m	Jan. 97	752.4	-24.8	3.9	10,255.3	-22.3	3.7	7.3	3
Current prices trend	\$m	Jan. 97	758.3	0.1	-0.3	10,237.8	0.2	1.4	7.4	3
1989-90 prices original	\$m	Dec. qtr 96	2,132.7	14.8	-3.8	28,726.4	15.0	0.2	7.4	3
New motor vehicle registrations										
Original	No.	Jan. 97	2,942	-17.9	4.0	46,169	-15.4	3.8	6.4	4
Trend	No.	Jan. 97	3,546	2.1	-3.3	54,683	1.4	3.7	6.5	4
Private new capital expenditure										
Current prices original	\$m	Dec. qtr 96	658	4.4	22.3	11,342	10.8	14.1	5.8	6
Current prices trend	\$m	Dec. qtr 96	641	5.4	51.5	10,611	-0.3	14.7	6.0	6
Private new capital expenditure	\$m	1995-96	1,804	..	-14.3	38,601	..	12.5	4.7	6
Expected private new capital expenditure	\$m	1997-98	1,787	34,683	5.2	6
Takings, licensed hotels, motels and guest houses with facilities										
	\$m	Dec. qtr 96	43.3	15.2	0.6	946.1	5.5	8.3	4.6	5
Production										
Dwelling unit approvals										
Original	No.	Jan. 97	351	-14.4	-1.1	10,106	2.7	21.7	3.5	7
Trend	No.	Jan. 97	471	-3.3	-1.1	11,430	1.3	12.3	4.1	7
New dwelling units commenced	No.	Dec. qtr 96	1,498	13.4	-5.6	31,176	2.9	2.2	4.8	8a
Value of non-residential building approvals										
	\$m	Jan. 97	41.9	49.6	-34.9	1,033.5	6.8	30.1	4.1	7
Value of total building activity										
Commenced	\$m	Sep. qtr 96	238.4	-41.0	-14.9	6,556.6	-2.0	1.1	3.6	8
Work done	\$m	Sep. qtr 96	283.2	-8.2	-5.5	6,898.2	3.9	-4.9	4.1	8
Work yet to be done	\$m	Sep. qtr 96	400.1	-5.5	18.5	9,530.6	2.1	4.4	4.2	8
Value of engineering construction work done										
	\$m	Sep. qtr 96	139.1	-38.5	0.6	3,719.3	-9.8	13.3	3.7	9
Manufacturing production										
Electricity (SA and NT)	mill. kWh	Jan. 97	n.a.	n.a.	n.a.	14,418	6.3	5.4	n.a.	10
Cheese	tonnes	Dec. 96	2,889	-13.1	-0.8	27,994	-5.7	5.9	10.3	10
Red meat	tonnes	Jan. 97	17,796	17.3	-9.8	198,466	4.4	-0.2	9.0	11
Mineral exploration expenditure (other than for petroleum)										
	\$m	Sep. qtr 96	5.4	-20.6	-3.6	274.2	-3.8	20.7	2.0	12

Indicator	Period	SOUTH AUSTRALIA			AUSTRALIA			SA as a % of Australia	Source index	
		No.	% change from		No.	% change from				
			Same period Previous period	year		Same period Previous period	year			
Prices										
CPI - All groups	1989-90=100	Dec. qtr 96	122.6	0.3	1.2	120.3	0.2	1.5	..	13
Price index of materials used in house building	1989-90=100	Jan. 97	120.5	0.1	2.1	115.8	-0.1	0.2	..	14
Price index of materials used in building other than houses	1989-90=100	Jan. 97	114.5	0.2	1.7	113.1	0.2	0.3	..	15
Price index of established houses	1989-90=100	Dec qtr 96	106.7	-1.0	-0.7	114.3	0.3	1.7	..	16
Price index of project homes	1989-90=100	Dec. qtr 96	107.3	-3.6	-4.8	109.1	-0.3	-0.3	..	16
Labour Force and Demography										
Population (resident at end qtr)	'000	Jun. qtr 96	1,479.1	0.1	0.4	18,286.3	0.3	1.3	8.1	17
Labour force										
Original	'000	Feb. 97	734.9	1.4	0.8	9,256.1	1.2	1.5	7.9	18
Trend	'000	Feb. 97	728.6	0.1	0.4	9,215.1	0.1	1.5	7.9	18
Employed persons										
Original	'000	Feb. 97	660.5	1.5	1.2	8,349.9	0.6	1.0	7.9	18
Trend	'000	Feb. 97	660.5	0.1	0.5	8,418.8	0.1	1.3	7.8	18
Participation rate										
Original (a)	%	Feb. 97	62.2	1.3	0.2	63.9	0.7	-0.1	..	18
Trend (a)	%	Feb. 97	61.7	0.0	-0.2	63.6	0.0	-0.1	..	18
Unemployment rate										
Original (a)	%	Feb. 97	10.1	-1.0	-3.8	9.8	0.5	0.4	..	18
Trend (a)	%	Feb. 97	9.4	0.0	0.0	8.6	0.0	0.1	..	18
Job vacancies	'000	Nov. 96	2.6	-48.0	73.3	62.3	-1.9	11.1	4.2	19
Average weekly overtime per employee working overtime										
Industrial disputes	hours	Nov. 96	6.4	-4.0	-3.2	7.2	5.3	3.3	..	19
	'000 working days lost	Dec. 96	1.1	-8.3	1,000.0	27.2	-47.7	145.0	4.0	20
Short-term overseas visitors										
arrivals	No.	Dec. 96	10,411	31.0	21.4	465,176	23.9	10.2	2.2	21
Short-term resident departures	No.	Dec. 96	12,552	57.1	16.7	294,952	35.2	5.5	4.3	21
Incomes										
Average weekly earnings (full-time adults; ordinary time)										
Original	\$	Nov. 96	639.50	1.1	3.8	685.60	1.3	3.9	..	22
Trend	\$	Nov. 96	637.80	0.4	3.2	686.50	1.1	4.0	..	22
Award rates of pay index (full-time adults, weekly)										
	Jun.1985=100	Jan. 97	149.5	0.1	1.3	147.0	0.0	1.2	..	23
Financial markets										
Secured housing finance										
Finance commitments	\$m	Jan. 97	246.1	-7.0	0.7	3,974.2	-2.3	16.6	6.2	24
Personal										
Commercial	\$m	Jan. 97	221.0	0.1	25.8	2,747.9	-1.9	7.6	8.0	25
Lease	\$m	Jan. 97	411.2	-33.2	-26.9	11,936.3	-7.8	-1.6	3.4	25
Interest rates										
Banks new housing loans (a)	%	Feb. 97	7.55	-0.7	-3.0	..	26
Banks business loans (a)										
small, medium sized business	%	Feb. 97	9.75	0.0	-1.5	..	26
large business	%	Feb. 97	9.30	0.0	-1.5	..	26

(a) Change is shown in terms of percentage points.

TIME SERIES

STATE ACCOUNTS AT CURRENT PRICES South Australia

Period	Final consumption expenditure		Gross fixed capital expenditure		State final demand	Gross State product (I)	Wages, salaries and supplements
	Private	Public	Private	Public			
ANNUAL (\$ million)							
1986-87	12,470	4,203	3,255	1,287	21,215	20,609	10,602
1987-88	13,748	4,392	3,964	1,196	23,300	22,828	11,230
1988-89	15,248	4,649	4,151	1,429	25,477	25,526	12,546
1989-90	16,474	5,003	4,488	1,577	27,542	27,969	13,954
1990-91	18,122	5,477	4,234	1,529	29,362	28,429	14,746
1991-92	18,958	5,812	4,021	1,429	30,220	28,719	14,718
1992-93	19,486	5,983	3,966	1,354	30,789	30,149	15,283
1993-94	20,438	6,687	3,929	1,186	32,240	31,951	16,258
1994-95	21,744	6,780	4,818	1,219	34,561	33,052	16,461
1995-96	23,060	6,800	3,904	1,203	34,767	35,149	17,288
PERCENTAGE CHANGE FROM PREVIOUS YEAR							
1987-88	10.2	4.5	21.8	-7.1	9.8	10.8	5.9
1988-89	10.9	5.9	4.7	19.5	9.3	11.8	11.7
1989-90	8.0	7.6	8.1	10.4	8.1	9.6	11.2
1990-91	10.0	9.5	-5.7	-3.0	6.6	1.6	5.7
1991-92	4.6	6.1	-5.0	-6.5	2.9	1.0	-0.2
1992-93	2.8	2.9	-1.4	-5.2	1.9	5.0	3.8
1993-94	4.9	11.8	-0.9	-12.4	4.7	6.0	6.4
1994-95	6.4	1.4	22.6	2.8	7.2	3.4	1.2
1995-96	6.1	-2.7	-19.0	-1.3	0.6	6.3	5.0
QUARTERLY, ORIGINAL (\$ million)							
1993 - 94 - March	4,964	1,505	927	254	7,650	7,785	3,919
June	5,073	1,926	1,006	387	8,392	7,992	4,194
1994 - 95 - September	5,296	1,655	1,125	243	8,319	8,102	4,115
December	5,660	1,700	1,529	292	9,181	8,720	4,073
March	5,277	1,559	1,052	319	8,207	7,992	4,050
June	5,511	1,866	1,112	365	8,854	8,238	4,223
1995 - 96 - September	5,693	1,653	892	224	8,462	8,208	4,197
December	6,093	1,635	1,122	262	9,112	9,894	4,454
March	5,548	1,515	886	292	8,241	8,401	4,233
June	5,726	1,797	1,004	425	8,952	8,646	4,404
1996 - 97 - September	5,816	1,624	1,076	228	8,744	8,458	4,398
QUARTERLY, TREND (\$ million)							
1993 - 94 - March	5,146	1,678	958	294	8,076	8,032	4,075
June	5,201	1,695	1,046	289	8,231	8,138	4,102
1994 - 95 - September	5,273	1,714	1,190	298	8,475	8,191	4,087
December	5,372	1,712	1,270	315	8,669	8,203	4,077
March	5,490	1,695	1,206	315	8,706	8,260	4,116
June	5,611	1,681	1,068	293	8,653	8,405	4,189
1995 - 96 - September	5,702	1,674	987	276	8,639	8,610	4,261
December	5,753	1,664	971	292	8,680	8,776	4,307
March	5,780	1,652	982	314	8,728	8,844	4,352
June	5,806	1,643	1,016	312	8,777	8,840	4,388
1996 - 97 - September	5,830	1,643	1,056	297	8,826	8,816	4,420
PERCENTAGE CHANGE FROM PREVIOUS QUARTER, TREND							
1993 - 94 - June	1.1	1.0	9.2	-1.7	1.9	1.3	0.7
1994 - 95 - September	1.4	1.1	13.8	3.1	3.0	0.7	-0.4
December	1.9	-0.1	6.7	5.7	2.3	0.1	-0.2
March	2.2	-1.0	-5.0	0.0	0.4	0.7	1.0
June	2.2	-0.8	-11.4	-7.0	-0.6	1.8	1.8
1995 - 96 - September	1.6	-0.4	-7.6	-5.8	0.2	2.4	1.7
December	0.9	-0.6	-1.6	5.8	0.5	1.9	1.1
March	0.5	-0.7	1.1	7.5	0.6	0.8	1.0
June	0.4	-0.5	3.5	-0.6	0.6	0.0	0.8
1996 - 97 - September	0.4	0.0	3.9	-4.8	0.6	-0.3	0.7

STATE ACCOUNTS AT AVERAGE 1989-90 PRICES

South Australia

Period	Final consumption expenditure		Gross fixed capital expenditure		State final demand	Gross State product (I)
	Private	Public	Private	Public		
ANNUAL (\$ million)						
1986-87	14,958	4,850	3,621	1,442	24,871	25,260
1987-88	15,451	4,877	4,247	1,304	25,879	25,959
1988-89	16,084	4,879	4,279	1,500	26,742	26,720
1989-90	16,474	5,003	4,488	1,577	27,542	27,969
1990-91	17,169	5,210	4,093	1,480	27,592	27,697
1991-92	17,447	5,328	3,849	1,364	27,988	27,023
1992-93	17,485	5,376	3,683	1,277	27,821	28,077
1993-94	18,037	5,711	3,575	1,120	28,443	29,004
1994-95	18,906	5,837	4,391	1,147	30,281	28,753
1995-96	19,692	5,588	3,525	1,121	29,926	30,038
PERCENTAGE CHANGE FROM PREVIOUS YEAR						
1987-88	3.3	0.6	17.3	-9.6	4.1	2.8
1988-89	4.1	0.0	0.8	15.0	3.3	2.9
1989-90	2.4	2.5	4.9	5.1	3.0	4.7
1990-91	4.2	4.1	-8.8	-6.2	0.2	-1.0
1991-92	1.6	2.3	-6.0	-7.8	1.4	-2.4
1992-93	0.2	0.9	-4.3	-6.4	-0.6	3.9
1993-94	3.2	6.2	-2.9	-12.3	2.2	3.3
1994-95	4.8	2.2	22.8	2.4	6.5	-0.9
1995-96	4.2	-4.3	-19.7	-2.3	-1.2	4.5
QUARTERLY, ORIGINAL (\$ million)						
1993 - 94 -						
December	4,749	1,385	914	277	7,325	7,872
March	4,378	1,323	839	243	6,783	7,007
June	4,457	1,605	906	365	7,333	7,054
1994 - 95 -						
September	4,638	1,423	1,022	231	7,314	7,076
December	4,938	1,447	1,425	278	8,088	7,703
March	4,569	1,370	942	297	7,178	6,872
June	4,761	1,597	1,002	341	7,701	7,102
1995 - 96 -						
September	4,880	1,402	808	211	7,301	7,058
December	5,206	1,394	990	246	7,836	8,485
March	4,723	1,290	808	273	7,094	7,180
June	4,883	1,502	919	391	7,695	7,315
1996 - 97 -						
September	4,944	1,379	1,044	211	7,578	7,223
QUARTERLY, TREND (\$ million)						
1993 - 94 -						
March	4,536	1,436	888	279	7,119	7,256
June	4,574	1,441	949	274	7,238	7,243
1994 - 95 -						
September	4,621	1,460	1,090	282	7,453	7,188
December	4,684	1,473	1,164	297	7,618	7,134
March	4,762	1,469	1,096	295	7,622	7,160
June	4,843	1,450	961	275	7,529	7,260
1995 - 96 -						
September	4,896	1,430	883	258	7,467	7,399
December	4,919	1,408	869	274	7,470	7,496
March	4,931	1,389	888	293	7,501	7,539
June	4,948	1,380	945	288	7,561	7,550
1996 - 97 -						
September	4,964	1,382	1,014	273	7,633	7,550
PERCENTAGE CHANGE FROM PREVIOUS QUARTER, TREND						
1993 - 94 -						
June	0.8	0.3	9.3	-1.8	1.7	-0.2
1994 - 95 -						
September	1.0	1.3	14.9	2.9	3.0	-0.8
December	1.4	0.9	6.8	5.3	2.2	-0.8
March	1.7	-0.3	-5.8	-0.7	0.1	0.4
June	1.7	-1.3	-12.3	-6.8	-1.2	1.4
1995 - 96 -						
September	1.1	-1.4	-8.1	-6.2	-0.8	1.9
December	0.5	-1.5	-1.6	6.2	0.0	1.3
March	0.2	-1.3	2.2	6.9	0.4	0.6
June	0.3	-0.6	6.4	-1.7	0.8	0.1
1996 - 97 -						
September	0.3	0.1	7.3	-5.2	1.0	0.0

MERCHANDISE EXPORTS BY SELECTED COMMODITY GROUP
Final stage of production in South Australia
 (\$'000)

Period	Meat and meat preparations	Cereals and cereal preparations	Wine	Wool and sheepskins	Machinery	Metals and metal manu- factures	Fish and crustaceans	Road vehicles, parts and accessories	Petroleum and petroleum products	Total
ANNUAL										
1988-89	181,058	475,481	71,474	415,098	104,163	239,656	95,720	124,815	189,679	2,451,372
1989-90	244,374	724,369	73,484	285,650	111,944	371,136	111,760	161,704	188,105	2,828,091
1990-91	234,299	587,199	123,567	257,576	152,940	433,341	122,604	117,218	291,507	3,007,137
1991-92	270,237	565,582	165,914	351,096	176,536	489,030	147,532	137,091	341,477	3,431,139
1992-93	282,181	573,375	192,255	318,989	211,426	490,594	154,608	338,359	372,445	3,760,602
1993-94	324,796	436,517	238,366	290,963	223,760	462,355	186,861	351,229	276,473	3,889,783
1994-95	307,785	261,052	250,527	301,645	285,309	571,094	191,386	332,321	285,310	3,829,336
1995-96	244,508	712,981	318,444	239,856	340,125	610,890	196,629	249,236	220,915	4,497,819
MONTHLY										
1995 - 96 -										
November	26,118	30,267	16,987	21,284	24,018	43,554	18,840	24,723	19,084	316,954
December	29,693	88,006	26,673	27,886	29,847	72,203	17,242	26,274	17,869	482,909
January	19,138	91,819	15,990	19,531	19,118	48,457	19,458	6,120	7,998	392,714
February	23,461	97,112	24,508	16,038	28,453	51,287	17,828	16,490	31,446	494,859
March	24,273	123,123	29,602	19,495	38,225	58,076	19,701	24,974	5,211	470,192
April	19,866	65,951	28,160	20,765	29,838	35,488	11,760	21,088	37,852	364,544
May	17,268	98,946	25,889	18,360	30,180	58,131	14,305	20,508	18,602	400,020
June	13,508	32,283	35,428	21,076	30,702	53,311	11,403	18,201	12,412	351,654
1996 - 97 -										
July	11,235	58,143	28,756	16,929	28,494	37,616	10,316	44,328	25,877	364,683
August	9,353	43,401	41,848	12,545	33,392	53,358	10,441	23,287	19,738	353,939
September	10,415	43,146	38,596	16,764	31,827	35,428	10,554	36,844	6,262	315,930
October	14,918	44,596	40,662	22,219	26,050	46,325	16,063	75,999	20,187	425,251
November	18,381	23,256	25,743	22,941	32,026	46,398	16,170	99,763	41,799	442,643
December	21,020	85,156	34,865	30,110	45,106	60,827	15,987	70,076	17,539	531,938
January	12,992	108,090	19,525	15,723	17,692	32,420	20,160	46,721	4,008	371,274

MERCHANDISE EXPORTS BY SELECTED COUNTRIES
Final stage of production in South Australia
 (\$'000)

Period	European Community Total			New Zealand	Japan	East Asia			Total East Asia	
	United States	Middle East	United Kingdom			China	Hong Kong	ASEAN		
ANNUAL										
1988-89	184,903	397,324	108,635	355,669	230,263	390,207	51,975	55,474	240,507	869,226
1989-90	229,169	551,953	121,319	412,855	289,970	359,643	86,303	49,273	277,659	929,209
1990-91	321,032	325,450	186,353	480,714	179,193	438,970	146,434	80,640	403,754	1,284,576
1991-92	300,139	381,761	220,048	550,258	214,522	647,674	148,308	108,583	437,670	1,627,108
1992-93	352,764	314,049	237,520	594,701	288,421	649,684	208,135	171,803	487,174	1,820,065
1993-94	393,611	280,499	263,092	571,047	311,999	625,481	220,211	165,163	533,977	1,898,975
1994-95	329,878	184,342	246,118	553,051	376,262	682,937	177,875	193,014	551,433	2,004,013
1995-96	279,554	525,348	287,725	692,043	376,596	672,882	293,319	202,015	572,338	2,057,418
MONTHLY										
1995 - 96 -										
November	16,581	39,009	11,481	29,406	35,619	55,812	15,051	16,409	57,340	172,470
December	27,920	110,671	22,035	66,857	35,278	49,304	17,528	20,841	77,181	187,795
January	19,707	84,056	12,780	44,747	19,036	65,269	29,107	16,119	32,921	180,607
February	23,556	107,885	31,326	78,448	27,767	57,813	37,040	19,718	61,310	202,870
March	24,868	51,582	25,976	65,053	36,573	58,325	58,657	21,622	34,894	203,679
April	21,849	38,851	22,902	43,787	26,359	53,273	36,243	18,290	50,279	187,632
May	20,722	8,796	22,925	60,080	33,384	69,732	28,586	21,158	38,396	185,996
June	27,622	27,415	39,268	81,921	27,720	61,132	10,310	15,755	40,697	142,068
1996 - 97 -										
July	26,282	19,794	23,491	40,076	58,190	37,820	13,448	14,210	62,815	154,047
August	24,015	30,364	28,940	57,177	39,328	51,371	17,025	20,786	42,577	158,894
September	45,320	32,344	25,005	41,099	26,834	36,242	13,183	18,520	37,433	128,273
October	74,331	30,300	28,487	58,551	40,469	67,584	20,077	12,605	45,510	173,392
November	100,550	23,047	32,472	56,564	33,258	57,227	17,778	27,440	64,683	188,651
December	71,033	81,328	28,903	65,562	27,270	58,791	40,825	21,865	47,697	197,845
January	46,625	83,790	12,234	27,352	32,026	30,619	16,492	15,494	27,417	115,134

MERCHANDISE EXPORTS BY INDUSTRY OF ORIGIN
Final stage of production in South Australia
(\$'000)

Period	Manufacturing								Total
	Agriculture, forestry and fishing	Mining	Food, beverages and tobacco	Petroleum, coal, chemical associated product	Metal product	Machinery and equipment	Other manufacturing	Other industries/confidential	
ANNUAL									
1988-89	891,978	107,269	515,739	176,037	260,978	270,215	96,203	132,953	2,451,372
1989-90	979,463	133,318	583,544	133,078	406,144	320,349	99,984	172,210	2,828,091
1990-91	804,154	120,930	599,030	264,813	474,541	336,500	155,351	251,818	3,007,137
1991-92	882,011	248,846	702,148	201,681	541,522	381,737	178,485	294,709	3,431,139
1992-93	883,725	294,586	766,518	195,387	509,303	641,930	178,726	290,427	3,760,602
1993-94	733,014	245,247	884,737	180,147	475,060	665,066	208,573	497,938	3,889,783
1994-95	592,129	268,537	886,337	186,661	584,838	711,529	243,314	355,991	3,829,336
1995-96	1,014,228	226,307	978,035	172,276	639,262	674,037	226,487	567,187	4,497,819
MONTHLY									
1995 - 96 -									
November	57,293	27,650	67,522	9,630	44,700	53,260	20,745	36,154	316,954
December	118,608	8,265	98,265	20,013	79,850	63,872	21,986	72,050	482,909
January	119,118	27,927	77,367	8,186	49,325	35,847	17,538	57,407	392,714
February	122,372	24,558	84,958	16,652	53,893	50,802	16,448	125,177	494,859
March	155,779	12,291	90,392	14,433	59,129	70,621	21,526	46,021	470,192
April	94,201	28,555	74,852	16,616	38,555	57,026	18,305	36,435	364,544
May	104,726	23,538	84,769	18,645	59,239	59,331	17,911	31,862	400,020
June	61,544	11,058	77,812	11,623	58,736	55,917	18,726	56,238	351,654
1996 - 97 -									
July	90,273	27,283	64,583	17,236	37,653	80,445	18,417	28,794	364,683
August	58,417	21,111	87,453	16,117	54,535	64,996	19,582	31,727	353,939
September	63,744	2,163	81,499	13,729	37,008	77,007	19,502	21,279	315,930
October	68,110	12,456	85,781	28,890	51,554	111,216	20,148	47,095	425,251
November	58,131	21,794	71,219	28,399	47,333	140,188	18,590	56,989	442,643
December	119,457	25,120	87,344	25,311	63,858	134,759	21,642	54,446	531,938
January	131,218	1,286	69,449	9,647	32,426	69,416	14,407	43,426	371,274

MERCHANDISE IMPORTS BY SELECTED COMMODITY GROUP
Goods released from Customs control in South Australia
(\$'000)

Period	Food, beverages and tobacco	Petroleum and petroleum products	Chemicals	Textiles	Metals and metal manufactures	Machinery	Road vehicles, parts and accessories	Other manufactured goods	Total
ANNUAL									
1988-89	60,395	169,397	144,766	47,592	135,225	411,092	415,120	344,344	1,861,622
1989-90	71,796	203,654	167,154	49,249	147,969	462,885	414,800	399,437	2,050,024
1990-91	78,926	425,262	140,894	49,087	135,772	515,226	372,603	366,304	2,193,851
1991-92	82,095	362,777	153,574	62,884	151,165	523,848	435,121	513,012	2,396,954
1992-93	91,756	570,334	186,001	57,434	255,924	609,212	661,714	521,723	3,068,122
1993-94	99,177	404,626	200,225	60,172	160,937	595,238	663,617	484,590	2,803,446
1994-95	115,930	330,430	220,536	64,524	214,432	695,038	749,658	563,368	3,099,510
1995-96	118,237	346,397	254,102	76,847	213,487	675,869	546,445	728,096	3,114,309
MONTHLY									
1995 - 96 -									
November	11,322	22,223	18,176	8,716	18,048	61,466	37,229	56,644	243,063
December	11,964	44,318	14,105	4,193	11,216	43,339	48,448	78,622	272,071
January	10,464	23,714	22,404	5,206	16,968	71,580	40,787	52,901	252,230
February	8,386	43,261	20,499	5,920	18,823	49,981	35,606	61,576	254,005
March	8,874	64	35,531	5,560	19,237	54,101	42,833	49,765	242,808
April	9,155	42,010	30,060	5,999	16,164	53,368	47,497	60,585	275,216
May	10,336	32,580	19,662	5,993	17,306	67,725	35,970	63,905	266,206
June	7,669	21,616	15,891	6,713	18,888	52,873	45,012	85,729	261,521
1996 - 97 -									
July	10,309	31,507	13,842	7,463	17,070	66,901	42,448	62,917	285,195
August	14,251	54,974	16,395	6,952	24,177	70,218	55,143	49,983	307,605
September	10,374	23,728	12,227	7,797	18,394	69,157	39,198	101,391	290,142
October	15,444	50,218	14,652	6,584	18,722	72,043	48,332	47,013	283,317
November	13,043	25,966	14,885	5,017	21,111	76,061	42,335	58,619	267,092
December	13,766	47,488	25,644	5,443	12,394	75,945	33,169	82,397	310,429
January	9,998	24,997	24,946	8,025	20,886	107,395	42,245	52,394	300,367

TURNOVER OF RETAIL ESTABLISHMENTS BY INDUSTRY
South Australia

Period	Food retailing	Department stores	Clothing and soft good retailing	Household good retailing	Recreational good retailing	Other retailing	Hospitality and services	Total
ANNUAL (\$ million)								
1986-87	2,240.3	893.8	396.8	601.0	229.7	332.3	862.0	5,555.9
1987-88	2,378.5	951.2	416.7	660.8	237.5	367.0	941.6	5,953.3
1988-89	2,534.9	971.8	462.2	726.6	268.5	420.7	1,019.1	6,403.8
1989-90	2,679.8	1,041.1	521.1	782.5	291.6	467.1	1,046.7	6,829.9
1990-91	2,978.2	1,069.0	543.9	778.8	303.9	497.7	1,111.2	7,282.7
1991-92	3,163.1	1,087.4	466.5	792.0	278.7	515.7	1,157.3	7,460.7
1992-93	3,018.5	1,101.5	434.2	783.3	311.2	617.4	1,132.7	7,398.8
1993-94	3,152.3	1,107.8	466.1	849.2	354.9	639.6	1,260.5	7,830.4
1994-95	3,360.7	1,128.7	524.0	881.1	359.0	737.8	1,562.3	8,553.6
1995-96	3,676.0	1,138.6	535.0	944.6	407.0	845.1	1,676.3	9,222.6
MONTHLY, ORIGINAL (\$ million)								
1995 - 96 -								
November	322.2	105.0	48.0	80.7	36.1	72.0	150.7	814.7
December	360.9	174.5	67.9	100.3	51.4	92.4	177.0	1,024.4
January	289.6	80.2	44.7	77.9	34.4	66.2	131.5	724.5
February	288.2	73.2	37.7	71.1	32.7	65.8	122.7	691.4
March	306.7	80.8	40.0	79.1	34.1	68.4	128.2	737.3
April	300.2	90.6	42.5	73.5	32.6	64.4	134.6	738.4
May	321.5	91.9	42.4	76.1	32.1	72.4	131.7	768.1
June	300.3	87.5	41.0	73.3	30.7	65.6	129.5	727.9
1996 - 97 -								
July	316.7	90.6	40.6	78.8	33.9	60.7	125.4	746.7
August	329.4	86.8	34.8	79.6	33.7	63.5	128.7	756.5
September	310.7	80.4	32.9	72.5	32.6	58.5	129.0	716.6
October	344.1	93.0	36.5	73.1	36.2	60.3	127.4	770.6
November	336.4	105.6	36.8	75.1	37.9	60.9	134.8	787.5
December	372.8	170.4	51.1	95.2	54.8	85.8	169.9	1,000.0
January	343.9	79.3	36.7	66.5	32.2	57.0	136.8	752.4
MONTHLY, TREND (\$ million)								
1995 - 96 -								
October	306.9	94.1	45.7	77.7	33.7	69.8	144.0	772.0
November	306.4	93.9	46.8	77.6	34.3	69.8	140.0	769.0
December	304.3	94.1	47.3	78.2	34.7	70.1	135.7	764.4
January	302.3	94.3	47.0	79.0	34.8	70.7	132.6	760.5
February	301.7	94.3	45.9	79.6	34.5	71.4	131.4	758.7
March	303.8	94.3	44.3	79.7	34.2	71.9	132.2	760.5
April	308.2	94.4	42.7	79.7	34.1	71.6	134.6	765.3
May	313.9	94.5	41.3	79.5	34.2	70.2	137.2	770.9
June	320.1	94.5	40.1	79.0	34.5	67.8	138.3	774.5
1996 - 97 -								
July	324.8	94.4	38.9	78.2	35.1	65.1	137.3	773.7
August	327.7	94.0	37.8	77.0	35.7	62.6	134.6	769.4
September	329.1	93.6	36.9	75.5	36.1	60.9	131.8	763.9
October	329.9	93.2	36.3	73.7	36.2	60.1	130.1	759.6
November	330.9	93.0	36.3	71.8	36.1	59.8	129.6	757.5
December	332.2	92.9	36.6	70.1	35.7	60.0	129.7	757.2
January	333.4	92.8	37.2	68.7	35.1	60.5	130.7	758.3
PERCENTAGE CHANGE FROM PREVIOUS MONTH, TREND								
1995 - 96 -								
November	-0.2	-0.2	2.4	-0.1	1.8	0.0	-2.8	-0.4
December	-0.7	0.2	1.1	0.8	1.2	0.4	-3.1	-0.6
January	-0.7	0.2	-0.6	1.0	0.3	0.9	-2.3	-0.5
February	-0.2	0.0	-2.3	0.8	-0.9	1.0	-0.9	-0.2
March	0.7	0.0	-3.5	0.1	-0.9	0.7	0.6	0.2
April	1.4	0.1	-3.6	0.0	-0.3	-0.4	1.8	0.6
May	1.8	0.1	-3.3	-0.3	0.3	-2.0	1.9	0.7
June	2.0	0.0	-2.9	-0.6	0.9	-3.4	0.8	0.5
1996 - 97 -								
July	1.5	-0.1	-3.0	-1.0	1.7	-4.0	-0.7	-0.1
August	0.9	-0.4	-2.8	-1.5	1.7	-3.8	-2.0	-0.6
September	0.4	-0.4	-2.4	-1.9	1.1	-2.7	-2.1	-0.7
October	0.2	-0.4	-1.6	-2.4	0.3	-1.3	-1.3	-0.6
November	0.3	-0.2	0.0	-2.6	-0.3	-0.5	-0.4	-0.3
December	0.4	-0.1	0.8	-2.4	-1.1	0.3	0.1	0.0
January	0.4	-0.1	1.6	-2.0	-1.7	0.8	0.8	0.1

NEW MOTOR VEHICLE REGISTRATIONS BY TYPE OF VEHICLE
South Australia

Period	Original			Seasonally adjusted			Trend estimate		
	Passenger Vehicles	Other vehicles	Total	Passenger Vehicles	Other vehicles	Total	Passenger Vehicles	Other vehicles	Total
ANNUAL									
1986-87	29,788	6,430	36,218
1987-88	29,915	5,775	35,690						
1988-89	31,920	6,816	38,736						
1989-90	35,211	7,808	43,019						
1990-91	34,753	6,619	41,372						
1991-92	32,351	5,333	37,684						
1992-93	32,894	5,577	38,471						
1993-94	32,806	5,781	38,587						
1994-95	35,830	6,736	42,566						
1995-96	36,067	6,828	42,895						
PERCENTAGE CHANGE FROM PREVIOUS YEAR									
1987-88	0.4	-10.2	-1.5
1988-89	6.7	18.0	8.5						
1989-90	10.3	14.6	11.1						
1990-91	-1.3	-15.2	-3.8						
1991-92	-6.9	-19.4	-8.9						
1992-93	1.7	4.6	2.1						
1993-94	-0.3	3.7	0.3						
1994-95	9.2	16.5	10.3						
1995-96	0.7	1.4	0.8						
MONTHLY									
1995 - 96 -									
October	3,217	430	3,647	3,063	452	3,514	2,963	525	3,488
November	3,187	564	3,751	2,957	522	3,479	3,003	537	3,540
December	2,987	565	3,552	3,125	575	3,700	3,053	554	3,608
January	2,350	479	2,829	2,943	597	3,541	3,093	573	3,666
February	3,244	588	3,832	3,177	621	3,799	3,116	592	3,708
March	3,271	596	3,867	3,198	544	3,741	3,116	609	3,725
April	2,745	541	3,286	3,111	627	3,738	3,090	619	3,709
May	3,080	712	3,792	2,991	630	3,621	3,037	622	3,658
June	3,091	841	3,932	2,999	669	3,668	2,959	617	3,576
1996 - 97 -									
July	2,862	595	3,457	2,813	572	3,384	2,875	604	3,479
August	3,024	545	3,569	2,853	600	3,453	2,816	585	3,402
September	2,939	498	3,437	2,883	548	3,431	2,802	566	3,368
October	2,817	548	3,365	2,520	557	3,077	2,823	554	3,377
November	2,976	539	3,515	2,953	503	3,456	2,869	549	3,417
December	2,997	585	3,582	2,978	585	3,563	2,926	548	3,474
January	2,493	449	2,942	3,109	564	3,673	2,993	553	3,546
PERCENTAGE CHANGE FROM PREVIOUS MONTH									
1995 - 96 -									
November	-0.9	31.2	2.9	-3.5	15.5	-1.0	1.3	2.3	1.5
December	-6.3	0.2	-5.3	5.7	10.2	6.4	1.7	3.2	1.9
January	-21.3	-15.2	-20.4	-5.8	3.8	-4.3	1.3	3.4	1.6
February	38.0	22.8	35.5	8.0	4.0	7.3	0.7	3.3	1.1
March	0.8	1.4	0.9	0.7	-12.4	-1.5	0.0	2.9	0.5
April	-16.1	-9.2	-15.0	-2.7	15.3	-0.1	-0.8	1.6	-0.4
May	12.2	31.6	15.4	-3.9	0.5	-3.1	-1.7	0.5	-1.4
June	0.4	18.1	3.7	0.3	6.2	1.3	-2.6	-0.8	-2.2
1996 - 97 -									
July	-7.4	-29.3	-12.1	-6.2	-14.5	-7.7	-2.8	-2.1	-2.7
August	5.7	-8.4	3.2	1.4	4.9	2.0	-2.1	-3.1	-2.2
September	-2.8	-8.6	-3.7	1.1	-8.7	-0.6	-0.5	-3.2	-1.0
October	-4.2	10.0	-2.1	-12.6	1.6	-10.3	0.7	-2.1	0.3
November	5.6	-1.6	4.5	17.2	-9.7	12.3	1.6	-0.9	1.2
December	0.7	8.5	1.9	0.8	16.3	3.1	2.0	-0.2	1.7
January	-16.8	-23.2	-17.9	4.4	-3.6	3.1	2.3	0.9	2.1

ACTUAL PRIVATE NEW CAPITAL EXPENDITURE BY SELECTED INDUSTRY AND TYPE OF ASSET
South Australia

Period	Industry			Total	Type of asset		
	Mining	Manufacturing	Other selected industries		New buildings and structures	Equipment, plant and machinery	
ANNUAL (\$ million)							
1990-91	122	742	988	1,852	628	1,224	
1991-92	193	763	668	1,625	392	1,233	
1992-93	218	564	739	1,522	416	1,105	
1993-94	97	613	773	1,484	356	1,128	
1994-95	115	829	1,162	2,106	351	1,755	
1995-96	194	716	893	1,804	348	1,456	
PERCENTAGE CHANGE FROM PREVIOUS YEAR							
1991-92	58.4	2.9	-32.3	-12.2	-37.5	0.8	
1992-93	12.8	-26.1	10.6	-6.4	6.1	-10.4	
1993-94	-55.5	8.7	4.6	-2.5	-14.5	2.0	
1994-95	18.3	35.2	50.3	41.9	-1.4	55.6	
1995-96	68.7	-13.6	-23.1	-14.3	-0.9	-17.0	
QUARTERLY, ORIGINAL (\$ million)							
1994 - 95 -							
December	40	226	419	684	77	607	
March	22	202	222	446	65	382	
June	40	272	183	494	58	436	
1995 - 96 -							
September	35	155	172	361	71	290	
December	49	205	285	538	89	450	
March	51	159	174	385	76	309	
June	59	197	263	519	113	406	
1996 - 97 -							
September	61	183	386	630	129	501	
December	80	225	353	658	165	493	
PERCENTAGE CHANGE FROM PREVIOUS QUARTER, ORIGINAL							
1994 - 95 -							
March	-45.7	-10.5	-46.9	-34.8	-16.4	-37.1	
June	86.0	34.4	-17.7	10.8	-9.6	14.3	
1995 - 96 -							
September	-12.5	-43.0	-6.0	-27.0	21.6	-33.5	
December	40.0	32.3	65.7	49.0	25.4	55.3	
March	4.1	-22.4	-38.9	-28.4	-14.6	-31.3	
June	15.7	23.9	51.1	34.8	48.7	31.4	
1996 - 97 -							
September	3.4	-7.1	46.8	21.4	14.2	23.4	
December	31.1	23.0	-8.5	4.4	27.9	-1.6	
QUARTERLY, TREND (\$ million)							
1994 - 95 -							
December	n.a.	n.a.	n.a.	556	89	468	
March				523	71	452	
June				466	64	402	
1995 - 96 -							
September				433	68	365	
December				423	78	345	
March				467	94	373	
June				544	114	430	
1996 - 97 -							
September				608	133	475	
December				641	146	495	
PERCENTAGE CHANGE FROM PREVIOUS QUARTER, TREND							
1994 - 95 -							
March	-5.9	-20.2	-3.4	
June				-10.9	-9.9	-11.1	
1995 - 96 -							
September				-7.1	6.3	-9.2	
December				-2.3	14.7	-5.5	
March				10.4	20.5	8.1	
June				16.5	21.3	15.3	
1996 - 97 -							
September				11.8	16.7	10.5	
December				5.4	9.8	4.2	

TOURIST ACCOMMODATION
South Australia

Period	Hotels, motels, guesthouses with facilities			Holiday flats, units and houses			Short-term caravan parks		
	Number of guest rooms	Room occupancy (per cent)	Takings (\$'000)	Number of flats, units and houses	Unit occupancy (per cent)	Takings (\$'000)	Number of sites	Site occupancy (per cent)	Takings (\$'000)
ANNUAL									
1986-87	8,497	52.9	79,254	n.a.	n.a.	n.a.	18,773	18.1	12,647
1987-88	9,156	50.8	89,321	1,105	45.4	8,109	18,926	17.8	13,248
1988-89	9,396	50.5	102,737	1,171	45.8	9,792	19,195	17.4	14,711
1989-90	10,316	52.0	121,788	1,113	48.4	11,381	19,847	18.4	17,174
1990-91	10,445	48.0	128,634	1,210	43.9	10,339	19,794	17.7	18,102
1991-92	10,745	46.6	130,578	1,302	40.4	10,492	20,601	17.1	19,111
1992-93	10,632	46.5	129,882	1,338	40.2	10,740	20,038	22.3	20,113
1993-94	10,597	48.6	138,782	1,338	40.9	11,700	19,591	23.7	20,790
1994-95	10,594	51.3	149,698	1,342	40.0	11,644	20,175	24.5	22,537
1995-96	10,772	52.4	161,136	1,356	41.5	12,844	20,187	24.9	23,578
PERCENTAGE CHANGE FROM PREVIOUS YEAR									
1987-88	7.8	..	12.7	n.a.	..	n.a.	0.8	..	4.8
1988-89	2.6	..	15.0	6.0	..	20.8	1.4	..	11.0
1989-90	9.8	..	18.5	-5.0	..	16.2	3.4	..	16.7
1990-91	1.3	..	5.6	8.7	..	-9.2	-0.3	..	5.4
1991-92	2.9	..	1.5	7.6	..	1.5	4.1	..	5.6
1992-93	1.1	..	-0.5	2.8	..	2.4	-2.7	..	5.2
1993-94	-0.3	..	6.9	0.0	..	8.9	-2.2	..	3.4
1994-95	0.0	..	7.9	0.3	..	-0.5	3.0	..	8.4
1995-96	1.7	..	7.6	1.0	..	10.3	0.1	..	4.6
QUARTERLY									
1994 - 95 -									
September	10,560	48.7	34,734	1,326	34.0	2,418	19,988	20.9	4,211
December	10,608	53.0	41,265	1,360	40.0	3,000	20,126	24.5	5,681
March	10,603	53.4	37,897	1,337	50.1	3,776	20,132	28.4	7,047
June	10,605	50.0	35,802	1,346	35.9	2,451	20,452	24.3	5,597
1995 - 96 -									
September	10,703	50.3	37,077	1,289	32.4	2,273	20,350	22.3	4,809
December	10,763	52.9	42,999	1,297	40.3	3,120	20,123	24.5	6,103
March	10,757	55.1	41,938	1,388	54.9	4,512	20,154	27.8	6,931
June	10,865	51.4	39,121	1,451	38.0	2,940	20,122	25.0	5,736
1996 - 97 -									
September	10,879	48.9	37,567	1,426	35.1	2,885	20,247	21.0	4,735
December	10,951	54.9	43,266	1,470	40.7	3,651	20,260	25.2	6,340
PERCENTAGE CHANGE FROM PREVIOUS QUARTER									
1994 - 95 -									
December	0.5	..	18.8	2.6	..	24.1	0.7	..	34.9
March	0.0	..	-8.2	-1.7	..	25.9	0.0	..	24.0
June	0.0	..	-5.5	0.7	..	-35.1	1.6	..	-20.6
1995 - 96 -									
September	0.9	..	3.6	-4.2	..	-7.3	-0.5	..	-14.1
December	0.6	..	16.0	0.6	..	37.3	-1.1	..	26.9
March	-0.1	..	-2.5	7.0	..	44.6	0.2	..	13.6
June	1.0	..	-6.7	4.5	..	-34.8	-0.2	..	-17.2
1996 - 97 -									
September	0.1	..	-4.0	-1.7	..	-1.9	0.6	..	-17.5
December	0.7	..	15.2	3.1	..	26.6	0.1	..	33.9

BUILDING APPROVALS
South Australia

Period	Number of dwelling units				Value (\$ million)			
	Houses		Total(a)		New residential building	Alterations and additions to residential building	Non-residential building	Total building
	Private sector	Total	Private sector	Total				
ANNUAL								
1987-88	6,276	6,900	7,383	9,009	497	94	749	1,340
1988-89	7,526	8,006	9,642	11,238	690	109	895	1,694
1989-90	7,246	7,675	10,180	11,701	733	110	914	1,757
1990-91	8,351	8,633	10,418	11,426	755	119	591	1,465
1991-92	8,613	8,931	10,254	11,290	756	124	627	1,506
1992-93	9,710	10,087	11,548	12,341	841	133	418	1,392
1993-94	9,470	9,901	11,046	11,777	839	122	375	1,336
1994-95	7,757	8,147	9,208	9,762	740	120	493	1,353
1995-96	4,930	5,109	5,760	5,968	469	119	566	1,155
PERCENTAGE CHANGE FROM PREVIOUS YEAR								
1988-89	19.9	16.0	30.6	24.7	38.8	16.0	19.5	26.4
1989-90	-3.7	-4.1	5.6	4.1	6.1	1.2	2.1	3.7
1990-91	15.2	12.5	2.3	-2.4	3.1	8.6	-35.4	-16.6
1991-92	3.1	3.5	-1.6	-1.2	0.1	3.9	6.1	2.8
1992-93	12.7	12.9	12.6	9.3	11.3	7.1	-33.2	-7.6
1993-94	-2.5	-1.8	-4.3	-4.6	-0.2	-8.0	-10.4	-4.0
1994-95	-18.1	-17.7	-16.6	-17.1	-11.8	-1.7	31.5	1.3
1995-96	-36.4	-37.3	-37.4	-38.9	-36.5	-0.7	14.8	-14.7
MONTHLY, ORIGINAL								
1995 - 96 -								
October	415	422	512	519	39.2	10.4	69.2	118.8
November	388	390	525	527	40.8	10.3	33.1	84.2
December	354	367	421	434	34.5	8.9	36.1	79.5
January	299	306	346	355	29.2	8.5	64.4	102.1
February	393	418	461	486	39.6	8.4	16.5	64.5
March	388	393	432	437	36.5	11.4	49.9	97.8
April	380	386	424	430	31.9	8.5	27.5	67.9
May	464	483	486	505	40.8	10.0	143.6	194.3
June	403	406	433	436	34.3	10.5	26.9	71.8
1996 - 97 -								
July	476	481	523	528	42.8	7.7	41.9	92.5
August	484	492	536	547	45.2	10.3	60.9	116.4
September	458	462	510	514	43.4	10.7	59.1	113.2
October	401	414	553	566	43.7	12.0	28.5	84.2
November	438	438	488	488	39.9	8.8	39.7	88.5
December	382	383	409	410	34.8	9.7	28.0	72.5
January	340	340	351	351	29.6	8.6	41.9	80.1
MONTHLY, TREND								
1995 - 96 -								
November	400	422	488	516	n.a.	n.a.	n.a.	n.a.
December	393	412	469	493				
January	392	408	454	476				
February	395	408	446	462				
March	403	411	444	454				
April	410	413	447	449				
May	415	415	451	449				
June	417	417	460	457				
1996 - 97 -								
July	419	422	473	473				
August	419	427	484	491				
September	419	431	490	502				
October	420	434	488	504				
November	421	436	478	498				
December	422	438	465	487				
January	422	437	449	471				
PERCENTAGE CHANGE FROM PREVIOUS MONTH, TREND								
1995 - 96 -								
December	-1.8	-2.4	-3.9	-4.5				
January	-0.3	-1.0	-3.2	-3.4				
February	0.8	0.0	-1.8	-2.9				
March	2.0	0.7	-0.4	-1.7				
April	1.7	0.5	0.7	-1.1				
May	1.2	0.5	0.9	0.0				
June	0.5	0.5	2.0	1.8				
1996 - 97 -								
July	0.5	1.2	2.8	3.5				
August	0.0	1.2	2.3	3.8				
September	0.0	0.9	1.2	2.2				
October	0.2	0.7	-0.4	0.4				
November	0.2	0.5	-2.0	-1.2				
December	0.2	0.5	-2.7	-2.2				
January	0.0	-0.2	-3.4	-3.3				

(a) Includes the number of self-contained dwelling units approved as part of the construction of non-residential building and alterations to existing buildings (including conversions to dwelling units).

BUILDING COMMENCEMENTS
South Australia

Period	Number of new dwelling units				Value (\$ million)				
	Houses		Total (a)		New residential building	Alterations and additions to residential building	Non-residential building		Total building
	Private sector	Total	Private sector	Total			Private sector	Total	
ANNUAL									
1986-87	5,345	6,458	6,552	8,987	475.7	75.3	430.1	674.4	1,225.4
1987-88	5,664	6,388	6,723	8,510	472.9	92.2	527.2	718.8	1,283.8
1988-89	7,132	7,580	8,853	10,303	646.2	103.7	760.3	964.1	1,709.9
1989-90	6,734	7,174	9,421	10,988	718.2	111.6	669.6	934.2	1,763.9
1990-91	7,863	8,177	9,683	10,838	727.5	118.2	367.1	554.0	1,399.6
1991-92	8,036	8,344	9,635	10,700	727.2	125.1	344.5	607.8	1,460.1
1992-93	9,122	9,416	10,889	11,646	816.2	122.4	205.5	458.7	1,397.2
1993-94	9,159	9,590	10,712	11,501	848.3	126.5	209.9	373.0	1,344.8
1994-95	7,745	8,210	9,132	9,796	765.5	125.3	251.7	518.5	1,409.3
1995-96	4,836	5,070	5,692	5,961	496.5	121.7	452.8	631.8	1,250.0
QUARTERLY									
1993 - 94 -									
March	1,977	2,023	2,412	2,556	188.1	29.8	51.1	97.6	315.4
June	2,235	2,396	2,629	2,883	213.4	30.2	55.2	93.5	337.1
1994 - 95 -									
September	2,413	2,526	2,857	3,085	235.6	34.3	57.0	101.8	371.7
December	2,303	2,435	2,691	2,873	221.1	31.8	52.8	99.5	352.4
March	1,631	1,735	1,942	2,073	167.9	26.4	55.6	92.1	286.4
June	1,396	1,512	1,623	1,763	140.9	32.8	86.3	225.1	398.8
1995 - 96 -									
September	1,398	1,504	1,651	1,771	142.4	29.4	69.5	108.4	280.3
December	1,242	1,295	1,519	1,587	133.9	34.0	85.5	119.5	287.4
March	1,044	1,089	1,248	1,295	109.2	29.4	80.1	139.9	278.4
June	1,153	1,183	1,274	1,308	111.0	28.8	217.7	264.0	403.9
1996 - 97 -									
September	1,191	1,207	1,302	1,321	109.1	26.2	66.8	103.1	238.4
December	1,216	1,232	1,482	1,498	n.y.a.	n.y.a.	n.y.a.	n.y.a.	n.y.a.

(a) Includes conversions.

VALUE OF BUILDING WORK DONE DURING PERIOD
South Australia

Period	New residential building				Alterations and additions to residential buildings	Non-residential building		Total building	
	Houses		Total			Private sector	Total	Private sector	Total
	Private sector	Total	Private sector	Total					
ANNUAL (\$ million)									
1986-87	310.0	364.8	385.4	492.2	78.4	447.9	645.2	908.1	1,215.8
1987-88	343.8	381.1	391.4	467.7	88.2	551.8	811.2	1,027.0	1,367.1
1988-89	450.2	469.2	538.8	597.0	104.1	657.5	902.2	1,297.3	1,603.3
1989-90	493.8	518.9	657.4	724.9	116.3	743.2	988.6	1,514.0	1,829.8
1990-91	578.3	600.2	713.6	782.3	122.0	621.9	876.6	1,455.4	1,780.8
1991-92	591.5	607.5	693.4	748.5	125.1	310.3	484.1	1,127.5	1,357.6
1992-93	647.2	660.9	743.8	780.6	127.1	297.9	570.9	1,166.3	1,478.6
1993-94	719.1	746.4	828.9	876.3	132.0	217.7	462.1	1,177.2	1,470.4
1994-95	659.6	693.6	766.1	816.4	129.4	271.6	476.9	1,164.3	1,422.7
1995-96	441.4	460.5	512.9	534.8	130.6	311.4	542.1	953.2	1,207.5
QUARTERLY (\$ million)									
1993 - 94 -									
March	167.4	172.2	192.3	202.3	32.4	50.2	96.8	274.3	331.5
June	175.7	182.9	204.2	215.3	30.8	53.1	111.0	287.5	357.2
1994 - 95 -									
September	185.6	193.5	215.3	230.8	37.4	63.7	113.5	316.1	381.8
December	185.3	195.7	216.0	231.4	35.6	63.0	117.8	313.1	384.7
March	153.3	159.5	179.5	187.9	25.1	57.2	104.4	261.4	317.4
June	135.3	144.8	155.3	166.3	31.2	87.8	141.3	273.7	338.8
1995 - 96 -									
September	117.9	124.5	138.8	146.6	31.4	72.7	121.7	241.7	299.6
December	119.2	125.6	137.7	144.8	39.9	87.1	142.9	264.7	327.6
March	101.6	105.4	118.8	123.1	26.7	63.4	122.0	208.6	271.8
June	102.6	105.0	117.6	120.3	32.6	88.1	155.6	238.3	308.5
1996 - 97 -									
September	97.4	99.3	109.6	111.6	28.0	83.2	143.6	219.5	283.2

PRODUCTION, SELECTED COMMODITIES
South Australia

Period	Footwear (pairs)	Gas (m megajoules)	Electricity (including NT) ('000 kWh)	Coal (tonnes)	Sawn timber(a) (m ³)
ANNUAL					
1986-87	2,147,468	82,550	9,666,694	2,435,010	194,458
1987-88	1,982,301	83,101	10,137,144	2,566,347	254,453
1988-89	2,062,085	86,546	10,588,647	2,674,215	292,335
1989-90	1,749,112	85,070	10,665,118	2,921,861	228,156
1990-91	1,837,602	73,265	8,878,357	2,441,040	240,193
1991-92	1,852,890	78,210	10,025,649	2,819,880	271,603
1992-93	1,406,178	83,000	10,226,734	2,753,610	317,096
1993-94	1,382,949	89,382	10,560,251	2,643,000	364,961
1994-95	1,430,417	86,123	10,051,056	2,554,560	392,349
1995-96	1,423,814	76,074	8,733,503	2,409,120	413,545
PERCENTAGE CHANGE FROM PREVIOUS YEAR					
1987-88	-7.7	0.7	4.9	5.4	30.9
1988-89	4.0	4.1	4.5	4.2	14.9
1989-90	-15.2	-1.7	0.7	9.3	-22.0
1990-91	5.1	-13.9	-16.8	-16.5	5.3
1991-92	0.8	6.7	12.9	15.5	13.1
1992-93	-24.1	6.1	2.0	-2.4	16.7
1993-94	-1.7	7.7	3.3	-4.0	15.1
1994-95	3.4	-3.6	-4.8	-3.3	7.5
1995-96	-0.5	-11.7	-13.1	-5.7	5.4
MONTHLY/QUARTERLY (b), ORIGINAL					
1995 - 96 -					
November	108,312	6,252	665,680	141,660	..
December	89,857	5,126	673,409	208,920	112,148
January	80,341	4,990	713,816	232,020	..
February	124,734	5,548	742,084	233,280	..
March	151,541	6,163	765,278	254,940	88,684
April	101,261	6,088	632,648	159,960	..
May	134,719	5,728	725,035	186,600	..
June	163,135	7,047	788,337	216,120	90,862
1996 - 97 -					
July	132,078	7,478	805,153	242,820	..
August	139,938	7,077	780,265	231,720	..
September	140,736	6,545	715,089	203,820	95,037
October	118,507	6,788	701,744	150,480	..
November	134,859	5,468	692,551	202,920	..
December	82,581	5,417	724,795	196,980	86,509
January	68,587	6,016	n.a.	239,760	..
PERCENTAGE CHANGE FROM PREVIOUS MONTH/QUARTER (b)					
1995 - 96 -					
December	-17.0	-18.0	1.2	47.5	..
January	-10.6	-2.7	6.0	11.1	..
February	55.3	11.2	4.0	0.5	..
March	21.5	11.1	3.1	9.3	-20.9
April	-33.2	-1.2	-17.3	-37.3	..
May	33.0	-5.9	14.6	16.7	..
June	21.1	23.0	8.7	15.8	2.5
1996 - 97 -					
July	-19.0	6.1	2.1	12.4	..
August	6.0	-5.4	-3.1	-4.6	..
September	0.6	-7.5	-8.4	-12.0	4.6
October	-15.8	3.7	-1.9	-26.2	..
November	13.8	-19.4	-1.3	34.8	..
December	-38.8	-0.9	4.7	-2.9	-9.0
January	-16.9	11.1	n.a.	21.7	..

(a) From Australian softwood logs only.

(b) Sawn timber production data available quarterly only.

PRODUCTION, LIVESTOCK PRODUCTS AND SELECTED COMMODITIES
South Australia

Period	Chicken	Pigmeat	Beef	Mutton	Lamb	Cheese	Wheat flour, other than self-raising
ANNUAL (tonnes)							
1984-85	35,882	36,508	79,111	35,800	30,136	23,273	74,643
1985-86	34,235	37,432	77,898	41,507	31,485	25,086	73,926
1986-87	33,776	40,761	90,283	43,934	32,416	27,438	80,310
1987-88	34,907	36,671	91,701	45,562	34,335	25,497	91,325
1988-89	32,946	40,364	87,160	42,159	36,203	24,704	96,418
1989-90	35,248	40,815	99,699	50,939	38,052	22,774	88,503
1990-91	31,945	38,644	87,036	65,434	32,038	24,522	83,727
1991-92	36,978	34,538	90,661	72,578	29,941	23,494	81,065
1992-93	38,619	38,153	96,338	65,689	39,334	26,140	87,761
1993-94	40,671	38,394	94,395	71,354	45,199	26,674	84,683
1994-95	39,103	32,063	99,108	66,759	36,147	29,154	80,666
1995-96	37,691	26,711	90,958	52,714	37,829	31,496	97,425
PERCENTAGE CHANGE FROM PREVIOUS YEAR							
1985-86	-4.6	2.5	-1.5	15.9	4.5	7.8	-1.0
1986-87	-1.3	8.9	15.9	5.8	3.0	9.4	8.6
1987-88	3.3	-10.0	1.6	3.7	5.9	-7.1	13.7
1988-89	-5.6	10.1	-5.0	-7.5	5.4	-3.1	5.6
1989-90	7.0	1.1	14.4	20.8	5.1	-7.8	-8.2
1990-91	-9.4	-5.3	-12.7	28.5	-15.8	7.7	-5.4
1991-92	15.8	-10.6	4.2	10.9	-6.5	-4.2	-3.2
1992-93	4.4	10.5	6.3	-9.5	31.4	11.3	8.3
1993-94	5.3	0.6	-2.0	8.6	14.9	2.0	-3.5
1994-95	-3.9	-16.5	5.0	-6.4	-20.0	9.3	-4.7
1995-96	-3.6	-16.7	-8.2	-21.0	4.7	8.0	20.8
MONTHLY (tonnes)							
1995 - 96 -							
November	3,182	2,608	9,908	7,085	4,008	2,706	8,187
December	3,419	1,907	7,036	3,906	2,691	2,912	8,952
January	3,286	2,092	9,208	5,711	2,693	2,419	6,566
February	2,991	2,297	9,065	6,320	3,213	4,806	8,503
March	3,361	1,899	8,091	5,468	3,385	1,357	8,283
April	3,438	1,985	6,352	3,523	2,965	2,122	7,665
May	2,880	2,646	7,037	3,286	3,282	2,174	14,422
June	2,942	2,136	5,913	2,880	1,921	1,963	6,811
1996 - 97 -							
July	3,110	2,561	5,342	2,424	1,904	2,120	7,099
August	2,827	2,454	5,292	2,504	1,863	2,452	7,468
September	3,042	1,896	6,752	3,487	2,784	3,092	7,089
October	3,155	1,775	8,232	5,282	3,429	3,699	6,866
November	3,156	2,215	9,032	7,105	2,991	3,326	7,331
December	3,594	1,527	6,782	4,254	2,582	2,889	8,187
January	3,447	1,693	7,460	5,361	3,257	n.y.a.	8,010
PERCENTAGE CHANGE FROM PREVIOUS MONTH							
1995 - 96 -							
December	7.4	-26.9	-29.0	-44.7	-32.9	7.6	9.3
January	-3.9	9.7	30.9	46.2	0.1	-16.9	-26.7
February	-9.0	9.8	-1.6	10.7	19.3	98.7	29.5
March	12.3	-17.3	-10.7	-13.5	5.3	-71.8	-2.6
April	2.3	4.5	-21.5	-35.6	-12.4	56.4	-7.5
May	-16.2	33.3	10.8	-6.7	10.7	2.5	88.2
June	2.2	-19.3	-16.0	-12.4	-41.5	-9.7	-52.8
1996 - 97 -							
July	5.7	19.9	-9.7	-15.8	-0.9	8.0	4.2
August	-9.1	-4.2	-0.9	3.3	-2.2	15.7	5.2
September	7.6	-22.7	27.6	39.3	49.4	26.1	-5.1
October	3.7	-6.4	21.9	51.5	23.2	19.6	-3.1
November	0.0	24.8	9.7	34.5	-12.8	-10.1	6.8
December	13.9	-31.1	-24.9	-40.1	-13.7	-13.1	11.7
January	-4.1	10.9	10.0	26.0	26.1	n.y.a.	-2.2

CONSUMER PRICE INDEX: BY GROUP
Adelaide

<i>Period</i>	<i>Food</i>	<i>Clothing</i>	<i>Housing</i>	<i>Household equipment and operation</i>	<i>Transport- ation</i>	<i>Tobacco and alcohol</i>	<i>Health and personal care</i>	<i>Recreation and education</i>	<i>All groups</i>
ANNUAL AVERAGE (1989-90 = 100)									
1985-86	77.0	74.0	73.4	78.9	74.8	72.7	63.2	74.9	74.7
1986-87	83.2	81.8	76.9	84.3	83.0	79.4	75.6	82.1	81.5
1987-88	87.6	88.2	79.5	89.9	88.6	85.7	84.0	89.6	87.0
1988-89	95.2	95.3	87.0	95.1	94.2	92.5	90.8	94.6	93.3
1989-90	100.0	100.0	100.0	100.0	100.0	100.0	100.0	100.0	100.0
1990-91	103.8	103.6	104.1	105.4	107.0	112.0	113.4	104.8	106.2
1991-92	106.0	105.3	100.4	107.5	110.5	118.6	127.8	107.7	108.9
1992-93	109.3	107.0	94.3	107.6	115.0	131.2	134.9	110.7	111.2
1993-94	111.7	106.6	92.1	108.0	117.8	141.5	142.7	113.7	113.4
1994-95	115.1	104.9	97.8	109.2	120.2	148.9	151.3	116.3	116.9
1995-96	118.2	105.1	103.6	112.1	124.5	160.1	158.9	118.0	121.2
PERCENTAGE CHANGE FROM PREVIOUS YEAR, ANNUAL AVERAGE									
1986-87	8.1	10.5	4.8	6.8	11.0	9.2	19.6	9.6	9.1
1987-88	5.3	7.8	3.4	6.6	6.7	7.9	11.1	9.1	6.7
1988-89	8.7	8.0	9.4	5.8	6.3	7.9	8.1	5.6	7.2
1989-90	5.0	4.9	14.9	5.2	6.2	8.1	10.1	5.7	7.2
1990-91	3.8	3.6	4.1	5.4	7.0	12.0	13.4	4.8	6.2
1991-92	2.1	1.6	-3.6	2.0	3.3	5.9	12.7	2.8	2.5
1992-93	3.1	1.6	-6.1	0.1	4.1	10.6	5.6	2.8	2.1
1993-94	2.2	-0.4	-2.3	0.4	2.4	7.9	5.8	2.7	2.0
1994-95	3.0	-1.6	6.2	1.1	2.0	5.2	6.0	2.2	3.1
1995-96	2.7	0.2	5.9	2.7	3.6	7.6	5.0	1.5	3.7
QUARTERLY (1989-90=100.0)									
1994 - 95 -									
September	114.5	105.2	92.4	108.3	119.6	144.2	148.3	115.1	114.9
December	114.3	105.1	95.6	108.7	119.8	147.8	148.7	116.2	116.0
March	115.7	104.2	100.8	109.5	119.9	150.2	153.0	117.2	117.8
June	115.7	105.1	102.2	110.2	121.4	153.2	155.3	116.5	118.8
1995 - 96 -									
September	117.8	104.8	102.7	111.5	124.4	154.8	155.4	116.5	120.1
December	118.2	105.2	103.8	112.0	124.3	159.7	158.7	117.3	121.1
March	118.2	104.9	103.9	112.4	123.9	162.2	161.0	118.9	121.6
June	118.4	105.5	103.9	112.3	125.3	163.6	160.6	119.2	122.0
1996 - 97 -									
September	119.2	105.5	103.5	113.0	124.4	164.7	160.9	119.2	122.2
December	120.7	106.0	100.5	113.8	125.5	164.9	164.9	119.8	122.6
PERCENTAGE CHANGE FROM SAME QUARTER OF PREVIOUS YEAR									
1994 - 95 -									
September	3.7	-2.1	-1.0	0.7	2.0	3.9	6.9	2.0	2.0
December	2.7	-1.9	4.4	0.5	1.9	5.6	7.4	2.8	2.8
March	3.3	-1.7	10.0	1.5	2.0	5.3	5.2	2.7	3.7
June	2.4	-0.7	11.2	1.8	2.4	6.0	4.8	1.5	3.8
1995 - 96 -									
September	2.9	-0.4	11.1	3.0	4.0	7.4	4.8	1.2	4.5
December	3.4	0.1	8.6	3.0	3.8	8.1	6.7	0.9	4.4
March	2.2	0.7	3.1	2.6	3.3	8.0	5.2	1.5	3.2
June	2.3	0.4	1.7	1.9	3.2	6.8	3.4	2.3	2.7
1996-97									
September	1.2	0.7	0.8	1.3	0.0	6.4	3.5	2.3	1.7
December	2.1	0.8	-3.2	1.6	1.0	3.3	3.9	2.1	1.2
PERCENTAGE CHANGE FROM PREVIOUS QUARTER									
1994 - 95 -									
December	-0.2	-0.1	3.5	0.4	0.2	2.5	0.3	1.0	1.0
March	1.2	-0.9	5.4	0.7	0.1	1.6	2.9	0.9	1.6
June	0.0	0.9	1.4	0.6	1.3	2.0	1.5	-0.6	0.8
1995 - 96 -									
September	1.8	-0.3	0.5	1.2	2.5	1.0	0.1	0.0	1.1
December	0.3	0.4	1.1	0.4	-0.1	3.2	2.1	0.7	0.8
March	0.0	-0.3	0.1	0.4	-0.3	1.6	1.4	1.4	0.4
June	0.2	0.6	0.0	-0.1	1.1	0.9	-0.2	0.3	0.3
1996-97									
September	0.7	0.0	-0.4	0.6	-0.7	0.7	0.2	0.0	0.2
December	1.3	0.5	-2.9	0.7	0.9	0.1	2.5	0.5	0.3

**AVERAGE RETAIL PRICES OF SELECTED CONSUMER ITEMS
Adelaide (cents)**

Item	Unit	Quarter				
		Dec. 1995	Mar. 1996	June 1996	Sept. 1996	Dec. 1996
Milk, carton, supermarket sales	1 litre	114	114	113	114	116
Cheese, processed, sliced, wrapped	500g	335	334	337	322	318
Butter	500g	165	165	167	160	172
Bread, white loaf, sliced, supermarket sales	680g	148	152	141	154	157
Self-raising flour	2kg	213	228	238	243	227
Beef:						
Rump steak	1kg	1,130	1,122	1,168	1,123	1,061
Corned silverside	1kg	642	637	645	624	625
Lamb:						
Leg	1kg	516	608	584	586	563
Loin chops	1kg	726	799	812	808	778
Forequarter chops	1kg	514	566	544	555	528
Pork:						
Leg	1kg	593	598	608	621	617
Loin chops	1kg	764	764	765	778	793
Chicken, frozen	1kg	331	350	348	369	375
Bacon, middle rashers	250g pkt	287	303	289	292	317
Sausages	1kg	366	356	358	351	351
Potatoes	1kg	134	72	70	67	73
Onions	1kg	192	108	74	83	128
Peaches, canned	825g	185	186	189	174	190
Eggs, 55g	doz	230	232	240	239	248
Sugar, white	2kg	186	189	180	182	182
Tea	250g	166	175	159	168	172
Coffee, instant, jar	150g	552	552	528	509	513
Margarine, polyunsaturated	500g	148	141	141	139	143
Petrol:						
Leaded	1 litre	74.0	73.6	75.9	73.6	76.1
Unleaded	1 litre	71.7	71.3	73.6	71.3	73.7

**ESTIMATED RESIDENT POPULATION AND COMPONENTS OF POPULATION CHANGE
South Australia**

Period	Live births(a)	Deaths(a)	Components of population change			Total increase	Population at end of period
			Natural increase	Net migration			
				Interstate	Overseas (b)		
ANNUAL							
1985-86	19,657	10,427	9,230	-1,417	5,084	11,353	1,382,550
1986-87	19,628	10,577	9,051	-3,977	6,200	10,214	1,392,764
1987-88	19,288	10,799	8,489	-1,240	5,952	12,145	1,404,909
1988-89	19,528	10,814	8,664	-221	6,665	14,120	1,419,029
1989-90	19,653	11,329	8,253	-252	5,762	13,027	1,432,056
1990-91	19,966	11,120	8,767	1,545	4,619	14,243	1,446,299
1991-92	19,530	11,035	8,532	-133	2,897	11,296	1,457,595
1992-93	19,686	11,163	8,403	-4,650	1,546	5,299	1,462,894
1993-94	20,036	11,743	7,949	-3,466	1,994	6,477	1,469,371
1994-95	19,559	11,496	8,022	-6,529	3,102	4,595	1,473,596
1995-96	17,455	11,186	7,670	-6,238	4,119	5,556	1,479,153
MONTHLY/QUARTERLY							
1995 - 96 -							
August	1,617	1,180
September	1,728	963	1,759	-2,157	1,106	708	1,474,304
October	1,528	1,057
November	1,665	929
December	1,397	842	1,752	-1,512	946	1,186	1,475,490
January	1,663	932
February	1,694	807
March	1,567	839	2,346	-1,476	1,370	2,240	1,477,730
April	1,416	776
May	1,732	1,121
June	1,448	886	1,813	-1,093	697	1,422	1,479,147
1996 - 97 -							
July	1,733	1,095
August	1,663	1,198
September	1,464	971	1,596	n.y.a.	n.y.a.	n.y.a.	n.y.a.
October	1,772	1,157
November	1,522	774

(a) Registrations.

(b) Includes category jumping.

LABOUR FORCE STATUS OF THE CIVILIAN POPULATION
South Australia

Period	Employed Full-time Males	Employed Full-time Females	Employed Part-time Males	Employed Part-time Females	Employed Total Males	Employed Total Females	Unem- ployed Males	Unem- ployed Females	Labour Force Males	Labour Force Females
ANNUAL AVERAGE (000)										
1986-87	337.1	137.0	25.4	106.6	362.5	243.6	35.6	24.5	398.1	268.1
1987-88	334.4	137.4	29.3	111.6	363.7	249.0	35.1	24.9	398.8	273.9
1988-89	345.5	145.3	29.7	115.8	375.2	261.1	32.2	22.5	407.4	283.6
1989-90	352.0	149.3	31.5	119.8	383.5	269.1	28.5	20.9	412.0	290.0
1990-91	345.2	148.4	34.1	125.7	379.3	274.1	37.8	25.3	417.1	299.4
1991-92	323.3	145.7	37.5	121.6	360.8	267.3	50.0	29.3	410.8	296.6
1992-93	322.2	143.2	39.2	126.8	361.4	270.0	51.9	29.9	413.3	299.9
1993-94	322.0	146.3	40.0	127.0	362.0	273.3	47.3	29.9	409.3	303.2
1994-95	323.1	151.5	42.6	131.3	365.7	282.8	44.6	28.7	410.3	311.5
1995-96	325.2	150.0	45.5	136.7	370.7	286.7	42.6	26.0	413.2	312.7
PERCENTAGE CHANGE FROM PREVIOUS YEAR, ANNUAL AVERAGE										
1987-88	-0.8	0.3	15.4	4.7	0.3	2.2	-1.4	1.6	0.2	2.2
1988-89	3.3	5.7	1.4	3.8	3.2	4.9	-8.3	-9.6	2.2	3.5
1989-90	1.9	2.8	6.1	3.5	2.2	3.1	-11.5	-7.1	1.1	2.3
1990-91	-1.9	-0.6	8.3	4.9	-1.1	1.9	32.6	21.1	1.2	3.2
1991-92	-6.3	-1.8	10.0	-3.3	-4.9	-2.5	32.3	15.8	-1.5	-0.9
1992-93	-0.3	-1.7	4.5	4.3	0.2	1.0	3.8	2.0	0.6	1.1
1993-94	-0.1	2.2	2.0	0.2	0.2	1.2	-8.9	0.0	-1.0	1.1
1994-95	0.3	3.6	6.5	3.4	1.0	3.5	-5.7	-4.0	0.2	2.7
1995-96	0.6	-1.0	6.8	4.1	1.4	1.4	-4.5	-9.4	0.7	0.4
MONTHLY, ORIGINAL (000)										
1995 - 96 -										
February	326.6	150.1	43.4	132.4	369.9	282.6	46.8	29.6	416.8	312.2
March	324.6	147.9	45.9	139.8	370.5	287.6	42.0	27.0	412.5	314.6
April	321.5	147.1	49.6	143.2	371.1	290.2	42.3	27.0	413.4	317.2
May	322.8	151.3	43.8	140.3	366.6	291.6	41.4	26.8	408.0	318.5
June	322.2	148.2	47.7	145.4	369.9	293.6	38.1	23.7	407.9	317.3
1996 - 97 -										
July	323.7	151.0	47.0	141.6	370.7	292.6	38.2	25.9	408.9	318.5
August	315.9	148.2	49.9	142.0	365.8	290.2	41.3	26.6	407.1	316.8
September	316.7	152.0	49.0	141.5	365.7	293.5	43.0	27.5	408.7	320.9
October	321.0	151.8	45.9	140.5	366.9	292.3	40.7	27.0	407.6	319.4
November	321.0	149.7	47.8	138.9	368.7	288.7	41.3	25.1	410.0	313.7
December	327.6	153.0	46.3	139.7	373.8	292.7	41.3	29.3	415.1	322.0
January	321.3	151.3	44.8	133.5	366.2	284.8	44.9	28.8	411.0	313.6
February	320.5	152.4	47.6	140.0	368.1	292.3	44.2	30.2	412.3	322.5
MONTHLY, TREND (000)										
1995 - 96 -										
February	326.3	149.8	44.4	136.5	370.7	286.3	42.3	26.1	413.0	312.4
March	325.5	149.7	45.0	138.1	370.3	287.8	42.3	26.2	412.5	314.0
April	324.6	149.8	45.3	139.2	369.9	289.0	42.0	26.4	412.0	315.5
May	323.3	150.1	46.3	140.1	369.6	290.2	41.6	26.7	411.2	316.9
June	322.0	150.6	47.3	140.4	369.3	291.0	41.2	27.0	410.4	318.0
1996 - 97 -										
July	320.7	150.8	48.2	140.5	368.9	291.3	41.0	27.3	409.9	318.7
August	319.7	150.8	48.7	140.4	368.4	291.2	41.2	27.6	409.6	318.9
September	319.4	150.6	48.5	140.4	367.9	291.0	41.5	27.7	409.4	318.7
October	319.6	150.4	48.1	140.5	367.7	290.9	41.8	27.6	409.5	318.6
November	320.1	150.3	47.6	140.6	367.7	290.9	41.8	27.5	409.5	318.4
December	320.8	150.2	47.2	140.9	368.0	291.1	41.7	27.3	409.6	318.4
January	321.4	150.1	46.9	141.3	368.3	291.4	41.4	27.1	409.8	318.5
February	322.1	150.1	46.6	141.6	368.7	291.7	41.2	27.0	409.9	318.7
PERCENTAGE CHANGE FROM PREVIOUS MONTH, TREND										
1995 - 96 -										
March	-0.2	-0.1	1.4	1.2	-0.1	0.5	0.0	0.4	-0.1	0.5
April	-0.3	0.1	0.7	0.8	-0.1	0.4	-0.7	0.8	-0.1	0.5
May	-0.4	0.2	2.2	0.6	-0.1	0.4	-1.0	1.1	-0.2	0.4
June	-0.4	0.3	2.2	0.2	-0.1	0.3	-1.0	1.1	-0.2	0.3
1996 - 97 -										
July	-0.4	0.1	1.9	0.1	-0.1	0.1	-0.5	1.1	-0.1	0.2
August	-0.3	0.0	1.0	-0.1	-0.1	0.0	0.5	1.1	-0.1	0.1
September	-0.1	-0.1	-0.4	0.0	-0.1	-0.1	0.7	0.4	0.0	-0.1
October	0.1	-0.1	-0.8	0.1	-0.1	0.0	0.7	-0.4	0.0	0.0
November	0.2	-0.1	-1.0	0.1	0.0	0.0	0.0	-0.4	0.0	-0.1
December	0.2	-0.1	-0.8	0.2	0.1	0.1	-0.2	-0.7	0.0	0.0
January	0.2	-0.1	-0.6	0.3	0.1	0.1	-0.7	-0.7	0.0	0.0
February	0.2	0.0	-0.6	0.2	0.1	0.1	-0.5	-0.4	0.0	0.1

LABOUR FORCE STATUS OF THE CIVILIAN POPULATION AGED 15 AND OVER
South Australia

Period	Civilian Population aged 15 and over	Civilian Population aged 15 and over	Unemployment rate Ages 15-19	Unemployment rate All Ages	Unemployment rate All Ages	Unemployment rate All Ages	Participation rate	Participation rate	Participation rate
	Males ('000)	Females ('000)	Persons (%)	Males (%)	Females (%)	Persons (%)	Males (%)	Females (%)	Persons (%)
ANNUAL AVERAGE									
1985-86	526.9	545.6	20.6	8.2	8.8	8.4	75.6	48.8	60.5
1986-87	534.8	552.4	22.1	8.9	9.1	9.0	74.4	48.5	61.3
1987-88	542.4	560.0	20.8	8.8	9.1	8.9	73.5	48.9	61.0
1988-89	547.9	566.9	17.8	7.9	7.9	7.9	74.3	50.0	62.0
1989-90	552.4	573.4	16.2	6.9	7.2	7.1	74.6	50.6	62.4
1990-91	558.3	579.8	19.2	9.1	8.4	8.8	74.7	51.6	63.0
1991-92	563.9	585.4	25.0	12.1	9.9	11.2	72.9	50.7	61.6
1992-93	567.4	588.9	26.6	12.6	10.0	11.5	72.8	51.0	61.7
1993-94	570.6	592.0	28.3	11.5	9.8	10.8	71.7	51.2	61.3
1994-95	573.7	594.7	25.2	10.9	9.2	10.2	71.5	52.4	61.8
1995-96	576.2	597.1	27.2	10.3	8.3	9.5	71.7	52.4	61.9
PERCENTAGE CHANGE FROM PREVIOUS YEAR, ANNUAL AVERAGE									
1986-87	1.5	1.2
1987-88	1.4	1.4							
1988-89	1.0	1.2							
1989-90	0.8	1.1							
1990-91	1.1	1.1							
1991-92	1.0	1.0							
1992-93	0.6	0.6							
1993-94	0.6	0.6							
1994-95	0.6	0.5							
1995-96	0.4	0.5							
MONTHLY, ORIGINAL									
1995 - 96 -									
December	575.9	596.9	25.6	9.7	8.2	9.1	72.6	52.7	62.5
January	576.2	597.2	30.5	10.9	9.6	10.4	72.1	51.4	61.6
February	576.5	597.5	30.5	11.2	9.5	10.5	72.3	52.3	62.1
March	576.7	597.7	26.6	10.2	8.6	9.5	71.5	52.6	61.9
April	577.0	598.0	24.6	10.2	8.5	9.5	71.7	53.0	62.2
May	577.3	598.2	27.3	10.1	8.4	9.4	70.7	53.2	61.8
June	577.6	598.5	22.4	9.3	7.5	8.5	70.6	53.0	61.7
1996 - 97 -									
July	578.0	598.9	24.1	9.3	8.1	8.8	70.7	53.2	61.8
August	578.4	599.2	23.8	10.2	8.4	9.4	70.4	52.9	61.5
September	578.8	599.6	23.7	10.5	8.6	9.7	70.6	53.5	61.9
October	579.1	599.9	20.7	10.0	8.5	9.3	70.4	53.2	61.7
November	579.5	600.2	22.2	10.1	8.0	9.2	70.8	52.3	61.4
December	579.8	600.5	25.9	9.9	9.1	9.6	71.6	53.6	62.5
January	580.0	600.7	22.9	10.9	9.2	10.2	70.9	52.2	61.4
February	580.3	601.0	n.y.a.	10.7	9.4	10.1	71.1	53.7	62.2
MONTHLY, TREND									
1995 - 96 -									
December	n.a.	n.a.	n.a.	10.2	8.3	9.4	71.9	51.9	61.7
January				10.2	8.3	9.4	71.8	52.1	61.7
February				10.3	8.4	9.4	71.6	52.3	61.8
March				10.3	8.4	9.4	71.5	52.5	61.9
April				10.2	8.4	9.4	71.4	52.8	61.9
May				10.1	8.4	9.4	71.2	53.0	61.9
June				10.0	8.5	9.4	71.1	53.1	61.9
1996 - 97 -									
July				10.0	8.6	9.4	70.9	53.2	61.9
August				10.1	8.7	9.4	70.8	53.2	61.9
September				10.1	8.7	9.5	70.7	53.2	61.8
October				10.2	8.7	9.5	70.7	53.1	61.7
November				10.2	8.6	9.5	70.7	53.1	61.7
December				10.2	8.6	9.5	70.6	53.0	61.7
January				10.1	8.5	9.4	70.6	53.0	61.7
February				10.1	8.5	9.4	70.6	53.0	61.7

LABOUR FORCE STATUS OF THE CIVILIAN POPULATION AGED 15 AND OVER
Adelaide Statistical Division and the balance of South Australia

<i>Period</i>	<i>Employed Males ('000)</i>	<i>Employed Females ('000)</i>	<i>Unemployed Males ('000)</i>	<i>Unemployed Females ('000)</i>	<i>Unemployment rate Males (%)</i>	<i>Unemployment rate Females (%)</i>	<i>Participation rate Males (%)</i>	<i>Participation rate Females (%)</i>
ADELAIDE STATISTICAL DIVISION								
1993 - 94 -								
February	261.3	202.7	39.4	25.8	13.1	11.3	71.6	51.2
March	267.0	204.6	35.7	24.6	11.8	10.7	72.0	51.4
April	264.3	205.5	34.0	20.8	11.4	9.2	70.9	50.7
May	265.2	207.0	34.0	24.3	11.4	10.5	71.1	51.8
June	263.3	204.2	32.7	23.6	11.0	10.4	70.3	51.0
1994 - 95 -								
July	265.6	210.8	33.6	24.0	11.2	10.2	71.1	52.5
August	260.9	209.8	36.6	23.3	12.3	10.0	70.6	52.1
November	261.7	212.6	33.2	23.1	11.3	9.8	69.9	52.6
February	267.9	209.6	35.8	24.7	11.8	10.6	71.9	52.3
May	264.7	212.0	34.6	22.0	11.6	9.4	70.8	52.2
1995 - 96 -								
August	263.1	215.3	33.9	19.4	11.4	8.3	70.2	52.3
November	265.3	212.3	32.8	17.0	11.0	7.4	70.4	51.1
February	265.0	212.1	37.3	22.7	12.3	9.7	71.3	51.2
May	264.7	218.5	32.7	21.1	11.0	8.8	70.0	53.2
1996 - 97 -								
August	266.0	214.4	31.3	21.0	10.5	8.9	69.8	52.2
November	264.5	219.4	32.7	20.8	11.0	8.7	69.7	53.3
February	263.3	218.1	34.7	23.4	11.6	9.7	69.7	53.4
ASD: NORTHERN ADELAIDE								
1993 - 94 -								
February	79.3	60.9	12.1	9.1	13.2	13.0	74.6	52.9
March	82.1	59.0	10.7	8.9	11.5	13.0	75.8	52.1
April	80.1	60.4	10.7	7.0	11.8	10.4	74.1	52.0
May	82.7	59.9	9.7	9.1	10.5	13.1	75.3	53.1
June	81.6	58.8	9.9	9.2	10.8	13.5	75.0	51.5
1994 - 95 -								
July	84.7	62.8	9.6	8.5	10.1	11.9	75.9	53.8
August	83.0	62.8	11.7	7.6	12.4	10.8	75.9	52.5
November	80.7	62.8	12.9	6.9	13.8	9.9	73.0	51.6
February	82.8	63.7	13.4	8.1	13.9	11.3	74.7	54.8
May	82.7	60.9	12.1	8.1	12.7	11.7	75.8	52.5
1995 - 96 -								
August	81.6	64.8	14.1	7.7	14.8	10.6	75.2	53.4
November	83.4	67.2	11.8	6.1	12.4	8.3	75.5	54.3
February	85.3	70.3	12.9	6.5	13.1	8.5	77.6	56.5
May	90.1	73.1	10.5	6.1	10.5	7.7	77.2	56.6
1996 - 97 -								
August	85.8	67.3	11.2	6.9	11.5	9.2	76.2	59.2
November	85.7	67.3	11.1	7.7	11.5	10.2	75.6	55.6
February	84.7	65.6	10.8	7.5	11.3	10.2	73.2	52.2
ASD: WESTERN ADELAIDE								
1993 - 94 -								
February	48.4	35.7	10.7	5.4	18.0	13.2	67.5	44.1
March	48.2	38.3	9.7	4.7	16.8	10.9	67.4	45.0
April	49.3	37.6	10.2	4.9	17.2	11.6	68.1	44.1
May	50.7	39.5	9.2	4.3	15.3	9.9	68.0	46.4
June	49.9	37.5	9.5	4.1	16.0	9.8	67.2	44.5
1994 - 95 -								
July	48.3	37.6	9.1	5.2	15.8	12.2	66.6	46.1
August	48.2	38.8	9.2	4.6	16.0	10.7	66.1	46.7
November	47.5	39.3	7.2	6.4	13.2	13.9	64.7	48.2
February	45.7	39.0	5.9	5.4	11.4	12.1	64.0	46.5
May	48.7	38.4	6.5	4.5	11.8	10.5	67.1	46.9
1995 - 96 -								
August	47.8	36.9	7.6	3.4	13.8	8.4	65.9	46.7
November	47.1	38.2	7.9	3.2	14.4	7.8	63.8	47.1
February	44.0	36.8	9.5	5.1	17.8	12.3	62.5	46.9
May	41.8	36.7	7.5	3.3	15.2	8.1	60.1	48.5
1996 - 97 -								
August	45.0	36.7	7.6	4.8	14.5	11.6	62.0	45.0
November	46.3	40.7	6.5	3.3	12.3	7.6	62.4	47.5
February	50.1	39.1	8.3	4.8	14.2	10.9	65.0	50.1

LABOUR FORCE STATUS OF THE CIVILIAN POPULATION AGED 15 AND OVER
Adelaide Statistical Division and the balance of South Australia

Period	Employed Males ('000)	Employed Females ('000)	Unem- ployed Males ('000)	Unem- ployed Females ('000)	Unemploy- ment rate Males (%)	Unemploy- ment rate Females (%)	Participa- tion rate Males (%)	Participa- tion rate Females (%)
ASD: EASTERN ADELAIDE								
1993 - 94 -								
February	54.9	45.2	6.5	4.1	10.6	8.3	71.0	55.1
March	57.9	46.7	5.4	3.6	8.5	7.2	70.4	54.1
April	56.3	48.7	4.6	3.0	7.6	5.8	70.6	54.4
May	54.2	47.7	6.0	4.4	9.9	8.4	69.5	54.8
June	56.0	49.7	4.4	3.4	7.3	6.4	68.0	56.3
1994 - 95 -								
July	55.0	51.0	6.3	3.7	10.3	6.8	69.2	58.3
August	56.0	50.5	6.2	3.8	9.9	7.0	71.8	58.8
November	58.8	50.7	5.4	2.4	8.5	4.5	72.1	59.3
February	59.4	45.8	7.4	3.8	11.0	7.7	74.2	54.5
May	58.5	45.2	6.5	3.5	10.0	7.2	69.7	53.6
1995 - 96 -								
August	56.4	46.6	4.8	2.5	7.9	5.2	70.9	53.6
November	54.3	45.9	5.2	*1.9	8.7	*4.0	70.4	51.2
February	53.0	43.9	5.4	4.9	9.3	10.0	69.3	52.2
May	51.4	44.1	4.2	4.4	7.5	9.1	65.6	52.2
1996 - 97 -								
August	54.4	43.5	4.4	3.1	7.5	6.7	66.6	52.1
November	54.2	44.2	5.6	3.0	9.3	6.4	68.0	53.1
February	50.8	49.3	7.0	5.0	12.1	9.2	68.5	57.4
ASD: SOUTHERN ADELAIDE								
1993 - 94 -								
February	78.7	60.9	10.1	7.2	11.4	10.6	71.9	52.0
March	78.8	60.6	9.9	7.4	11.2	10.9	72.8	53.2
April	78.6	58.9	8.4	5.8	9.7	9.0	70.1	51.6
May	77.6	59.9	9.1	6.6	10.5	9.9	70.3	52.1
June	75.9	58.2	8.9	6.9	10.5	10.6	69.6	51.2
1994 - 95 -								
July	77.7	59.3	8.7	6.5	10.0	9.9	70.5	51.5
August	73.7	57.8	9.5	7.3	11.4	11.2	67.4	50.8
November	74.7	59.8	7.6	7.5	9.3	11.1	68.5	52.4
February	80.0	61.1	9.2	7.5	10.4	10.9	72.5	52.5
May	74.8	67.5	9.5	5.9	11.3	8.0	69.0	54.6
1995 - 96 -								
August	77.4	66.9	7.3	5.7	8.6	7.9	67.6	53.9
November	80.4	61.0	7.9	5.7	8.9	8.6	69.7	50.4
February	82.7	61.1	9.5	6.2	10.3	9.2	72.1	51.4
May	81.3	64.6	10.5	7.3	11.4	10.2	71.9	53.5
1996 - 97 -								
August	80.7	66.9	8.1	6.1	9.1	8.4	70.9	55.2
November	78.3	67.3	9.5	6.8	10.8	9.2	69.7	54.9
February	77.6	64.1	8.7	6.1	10.0	8.7	70.4	54.2
BALANCE OF SOUTH AUSTRALIA (Excludes ASD)								
1993 - 94 -								
February	98.3	69.6	10.7	7.7	9.8	10.0	72.1	52.8
March	97.5	68.4	11.7	8.1	10.7	10.5	72.2	52.2
April	97.6	69.0	10.5	6.7	9.8	8.8	71.5	51.6
May	98.6	67.3	9.8	6.7	9.0	9.1	71.6	50.5
June	97.8	69.8	11.9	7.5	10.8	9.7	72.5	52.8
1994 - 95 -								
July	100.4	72.2	8.8	6.4	8.1	8.1	72.2	53.6
August	101.9	69.6	7.8	5.5	7.1	7.3	72.6	51.2
November	102.6	69.2	9.0	6.6	8.1	8.7	73.7	51.7
February	103.9	73.0	9.6	6.1	8.5	7.7	74.8	53.8
May	103.2	76.3	8.6	4.1	7.7	5.1	73.5	54.6
1995 - 96 -								
August	105.9	73.0	9.5	4.7	8.2	6.0	75.8	52.7
November	107.2	73.0	7.6	6.5	6.7	8.2	75.4	53.9
February	105.0	70.5	9.5	6.9	8.3	8.9	75.2	52.3
May	101.9	73.1	8.7	5.7	7.9	7.3	72.6	53.2
1996 - 97 -								
August	99.8	75.7	10.0	5.7	9.1	7.0	72	54.8
November	102.4	72.9	8.0	6.2	7.3	7.8	72.3	53.2
February	104.9	74.2	9.5	6.8	8.3	8.4	74.8	54.3

* Estimate has a relative standard error exceeding 25%. It is subject to sampling variability too high for most practical uses.

AVERAGE WEEKLY EARNINGS OF EMPLOYEES
South Australia

Period	Full-time adults						All employees		
	Ordinary time earnings			Total earnings			Males	Females	Persons
	Males	Females	Persons	Males	Females	Persons			
ANNUAL AVERAGE (\$ per week)									
1985-86	406.30	340.50	388.30	431.80	346.60	408.40	389.00	252.70	334.50
1986-87	431.80	363.70	412.20	455.90	370.20	431.20	411.80	268.90	352.20
1987-88	458.60	389.70	438.40	485.00	397.00	459.20	440.10	295.10	379.60
1988-89	481.50	424.30	465.70	517.60	435.10	494.90	473.40	315.10	408.50
1989-90	517.50	454.90	499.40	560.70	466.50	533.50	511.60	338.00	437.80
1990-91	561.30	486.10	537.90	598.90	496.10	566.90	546.70	358.10	462.00
1991-92	588.40	524.10	567.80	624.90	534.00	595.80	564.80	386.90	483.70
1992-93	610.10	534.90	585.40	646.40	546.80	613.70	560.00	382.60	477.40
1993-94	625.10	547.60	600.00	667.50	560.10	632.70	595.10	396.60	503.30
1994-95	632.70	559.10	608.20	681.70	572.50	645.30	599.90	411.90	513.40
1995-96	653.80	555.90	622.80	703.15	568.50	660.05	620.10	403.90	520.65
PERCENTAGE CHANGE FROM PREVIOUS YEAR									
1986-87	6.3	6.8	6.2	5.6	6.8	5.6	5.9	6.4	5.3
1987-88	6.2	7.1	6.4	6.4	7.2	6.5	6.9	9.7	7.8
1988-89	5.0	8.9	6.2	6.7	9.6	7.8	7.6	6.8	7.6
1989-90	7.5	7.2	7.2	8.3	7.2	7.8	8.1	7.3	7.2
1990-91	8.5	6.9	7.7	6.8	6.3	6.3	6.9	5.9	5.5
1991-92	4.8	7.8	5.6	4.3	7.6	5.1	3.3	8.0	4.7
1992-93	3.7	2.1	3.1	3.4	2.4	3.0	-0.8	-1.1	-1.3
1993-94	2.5	2.4	2.5	3.3	2.4	3.1	6.3	3.7	5.4
1994-95	1.2	2.1	1.4	2.1	2.2	2.0	0.8	3.9	2.0
1995-96	3.3	-0.6	2.4	3.1	-0.7	2.3	3.4	-1.9	1.4
QUARTERLY (\$ per week)									
1993 - 94 -									
20 May	622.90	551.40	599.80	664.30	567.10	632.90	595.80	399.80	504.80
1994 - 95 -									
19 August	628.20	553.70	602.60	674.20	566.70	637.20	591.40	410.80	507.40
18 November	619.10	558.00	598.60	667.50	572.80	635.70	586.90	410.20	505.10
17 February	648.40	560.80	619.90	699.90	572.80	658.50	620.10	415.80	527.90
19 May	635.10	563.90	611.70	685.20	577.80	649.90	601.10	410.80	513.30
1995 - 96 -									
18 August	639.90	560.10	613.80	684.50	571.80	647.60	600.80	408.60	510.20
17 November	647.60	549.20	616.10	693.10	560.90	650.90	607.60	396.30	510.60
16 February	658.90	557.20	626.30	713.60	569.50	667.30	631.40	402.40	527.20
17 May	668.90	557.10	633.80	721.40	571.80	674.40	640.50	408.30	534.60
1996 - 97 -									
16 August	666.70	562.40	632.40	720.10	574.40	672.30	628.50	403.60	523.60
15 November	669.60	575.30	639.50	728.30	591.80	684.80	626.80	402.30	522.20
PERCENTAGE CHANGE FROM CORRESPONDING REFERENCE DATE IN PREVIOUS YEAR									
1994 - 95 -									
19 May	2.0	2.3	2.0	3.1	1.9	2.7	0.9	2.8	1.7
1995 - 96 -									
18 August	1.9	1.2	1.9	1.5	0.9	1.6	1.6	-0.5	0.6
17 November	4.6	-1.6	2.9	3.8	-2.1	2.4	3.5	-3.4	1.1
16 February	1.6	-0.6	1.0	2.0	-0.6	1.3	1.8	-3.2	-0.1
17 May	5.3	-1.2	3.6	5.3	-1.0	3.8	6.6	-0.6	4.1
1996 - 97 -									
16 August	4.2	0.4	3.0	5.2	0.5	3.8	4.6	-1.2	2.6
15 November	3.4	4.8	3.8	5.1	5.5	5.2	3.2	1.5	2.3
PERCENTAGE CHANGE FROM PREVIOUS REFERENCE DATE									
1993 - 94 -									
1994 - 95 -									
19 August	0.9	0.4	0.5	1.5	-0.1	0.7	-0.7	2.8	0.5
18 November	-1.4	0.8	-0.7	-1.0	1.1	-0.2	-0.8	-0.1	-0.5
17 February	4.7	0.5	3.6	4.9	0.0	3.6	5.7	1.4	4.5
19 May	-2.1	0.6	-1.3	-2.1	0.9	-1.3	-3.1	-1.2	-2.8
1995 - 96 -									
18 August	0.8	-0.7	0.3	-0.1	-1.0	-0.4	0.0	-0.5	-0.6
17 November	1.2	-1.9	0.4	1.3	-1.9	0.5	1.1	-3.0	0.1
16 February	1.7	1.5	1.7	3.0	1.5	2.5	3.9	1.5	3.3
17 May	1.5	0.0	1.2	1.1	0.4	1.1	1.4	1.5	1.4
1996 - 97 -									
16 August	-0.3	1.0	-0.2	-0.2	0.5	-0.3	-1.9	-1.2	-2.1
15 November	0.4	2.3	1.1	1.1	3.0	1.9	-0.3	-0.3	-0.3

FINANCE COMMITMENTS
South Australia

<i>Secured housing finance commitments to individuals</i>						
<i>Construction and purchase of dwellings</i>						
<i>Period</i>	<i>Number of dwelling units</i>	<i>Amount (\$ million)</i>	<i>Alterations and additions (\$ million)</i>	<i>Personal finance commitments (\$ million)</i>	<i>Commercial finance commitments (\$ million)</i>	<i>Lease finance commitments (\$ million)</i>
ANNUAL						
1985-86	21,714	920.1	48.9	1,203.9	3,492.7	339.8
1986-87	21,658	965.5	47.1	1,222.4	4,242.8	334.5
1987-88	26,582	1,266.6	47.0	1,448.9	6,486.6	392.1
1988-89	29,977	1,574.2	51.4	1,534.1	7,285.5	512.4
1989-90	25,650	1,438.2	45.8	1,525.7	6,926.4	445.4
1990-91	28,694	1,731.3	58.8	1,503.6	6,257.0	323.2
1991-92	31,765	2,083.8	88.8	1,456.7	6,667.9	256.2
1992-93	36,960	2,569.5	102.8	1,656.9	5,122.5	249.5
1993-94	45,725	3,387.9	221.8	1,840.3	5,467.2	250.6
1994-95	36,429	2,879.7	242.2	2,152.2	5,405.6	271.4
1995-96	38,707	2,982.2	240.7	2,211.5	6,516.2	265.4
PERCENTAGE CHANGE FROM PREVIOUS YEAR						
1986-87	-0.3	4.9	-3.7	1.5	21.5	-1.6
1987-88	22.7	31.2	-0.2	18.5	52.9	17.2
1988-89	12.8	24.3	9.4	5.9	12.3	30.7
1989-90	-14.4	-8.6	-10.9	-0.5	-4.9	-13.1
1990-91	11.9	20.4	28.4	-1.4	-9.7	-27.4
1991-92	10.7	20.4	51.0	-3.1	6.6	-20.7
1992-93	16.4	23.3	15.8	13.7	-23.2	-2.6
1993-94	23.7	31.9	115.7	11.1	6.7	0.5
1994-95	-20.3	-15.0	9.2	16.9	-1.1	8.3
1995-96	6.3	3.6	-0.6	2.8	20.5	-2.2
MONTHLY						
1995 - 96 -						
November	3,593	271.3	23.3	186.1	488.3	21.1
December	2,981	231.2	17.8	171.1	720.2	25.7
January	2,965	226.9	17.4	175.6	562.2	13.0
February	3,482	264.6	20.6	179.2	447.5	23.5
March	3,694	284.8	23.2	186.1	542.7	25.4
April	3,271	249.5	18.3	175.1	604.8	16.5
May	3,276	252.0	18.9	192.4	773.7	24.8
June	2,707	213.6	26.1	182.0	627.7	31.3
1996 - 97 -						
July	3,013	237.8	21.7	188.3	656.7	22.8
August	2,776	216.9	18.8	180.8	444.0	18.9
September	3,064	250.6	19.4	175.0	491.6	22.2
October	2,965	233.6	14.0	203.6	444.8	15.3
November	3,115	248.1	14.2	188.8	541.7	17.8
December	2,995	251.5	13.1	220.7	615.6	19.2
January	2,881	230.8	15.3	221.0	411.2	13.7
PERCENTAGE CHANGE FROM PREVIOUS MONTH						
1995 - 96 -						
December	-17.0	-14.8	-23.5	-8.1	47.5	22.0
January	-0.5	-1.9	-2.2	2.6	-21.9	-49.4
February	17.4	16.6	18.1	2.0	-20.4	80.2
March	6.1	7.6	12.8	3.8	21.3	8.2
April	-11.5	-12.4	-20.9	-5.9	11.4	-34.9
May	0.2	1.0	3.2	9.8	27.9	50.1
June	-17.4	-15.2	37.9	-5.4	-18.9	26.2
1996 - 97 -						
July	11.3	11.3	-16.8	3.4	4.6	-27.1
August	-7.9	-8.8	-13.4	-4.0	-32.4	-17.2
September	10.4	15.5	3.4	-3.2	10.7	17.8
October	-3.2	-6.8	-27.9	16.3	-9.5	-31.2
November	5.1	6.2	1.6	-7.3	21.8	16.6
December	-3.9	1.4	-8.4	16.9	13.6	7.7
January	-3.8	-8.2	17.5	0.1	-33.2	-28.6

PUBLICATIONS SOURCE INDEX

- 1 *Australian National Accounts: State Accounts* (5242.0) Quarterly
- 2 *International Merchandise Trade, Australia* (5422.0) Quarterly
- 3 *Retail Trade, Australia* (8501.0) Monthly
- 4 *New Motor Vehicles Registrations, Australia, Preliminary* (9301.0) Monthly
- 5 *Tourist Accommodation, Australia* (8635.0) Quarterly
- 6 *State Estimates of Private New Capital Expenditure* (5646.0) Quarterly
- 7 *Building Approvals, Australia* (8731.0) Monthly
- 8 *Building and Construction Activity, Australia* (8754.0) Quarterly
- 8a *Building Activity, Australia, Dwelling Unit Commencements, Preliminary* (8750.0) Quarterly
- 9 *Engineering Construction Activity, Australia* (8762.0.40.001) Quarterly
- 10 *Manufacturing Production, Australia, Preliminary* (8301.0) Monthly
- 11 *Livestock Products, Australia* (7215.0) Monthly
- 12 *Actual and Expected Private Mineral Exploration, Australia* (8412.0) Quarterly
- 13 *Consumer Price Index* (6401.0) Quarterly
- 14 *Price Index of Materials Used in House Building, Six State Capital Cities and Canberra* (6408.0) Monthly
- 15 *Price Index of Materials Used in Building Other Than House Building, Six State Capital Cities and Canberra* (6407.0) Monthly
- 16 *House Price Indexes: Eight Capital Cities* (6416.0) Quarterly
- 17 *Australian Demographic Statistics* (3101.0) Quarterly
- 18 *The Labour Force, Australia, Preliminary* (6202.0) Monthly
- 19 *Job Vacancies and Overtime, Australia* (6354.0) Quarterly
- 20 *Industrial Disputes, Australia* (6321.0) Monthly
- 21 Unpublished overseas arrival and departure statistics on microfiche
- 22 *Average Weekly Earnings, States and Australia* (6302.0) Quarterly
- 23 *Award Rates of Pay Indexes, Australia* (6312.0) Monthly
- 24 *Housing Finance for Owner Occupation, Australia* (5609.0) Monthly
- 25 Unpublished statistics available from PC AUSSTATS
- 26 *Reserve Bank of Australia Bulletin*

ABS PUBLICATIONS AND PRODUCTS

Statistics collected by the ABS are generally made available in published form. Some, including those not published, are available in one or more of the following forms: microfiche, magnetic tape, computer printout, CD, floppy disk, photocopy and clerically extracted tabulation.

Current publications produced by the ABS are listed in the *Catalogue of Publications and Products, Australia* (1101.0). The ABS also issues on Tuesdays and Fridays a *Release Advice* (1105.0) which lists publications to be released within the next few days. The Catalogue and Release Advice are available from any ABS Office.

To receive ABS publications on a regular basis contact the ABS *Publication Mailing Service* on 1800 02 0608.

A large range of data is available via on-line services, diskette, magnetic tape, tape cartridge and CD ROM. For more details about our electronic data services, contact any ABS Office.

The *ABS Information Consultancy Service* has specialist staff to assist and advise clients

with their statistical inquiries. For more detailed information about these services call at the ABS, 55 Currie Street, Adelaide, telephone the Information Officer on (08) 8237 7100, or write to Information Service, ABS, GPO Box 2272, Adelaide SA 5001.

The ABS also provides a *Statistical Consultancy Service*, for expert assistance in survey, sample and questionnaire design, data collection, processing and analysis, and statistical modelling. For more information contact Gary Niedorfer, on (08) 8237 7379.

SYMBOLS AND OTHER USAGES

n.a. not available
 n.y.a. not yet available
 .. not applicable
 0, 0.0 nil or rounded to zero

Where figures have been rounded, discrepancies may occur between sums of the component items and totals.

For more information . . .

The ABS publishes a wide range of statistics and other information on Australia's economic and social conditions. Details of what is available in various publications and other products can be found in the ABS Catalogue of Publications and Products available from all ABS Offices.

ABS Products and Services

Many standard products are available from ABS bookshops located in each State and Territory. In addition to these products, information tailored to the needs of clients can be obtained on a wide range of media by contacting your nearest ABS Office. The ABS also provides a Subscription Service for standard products and some tailored information services.

National Dial-a-Statistic Line

0055 86 400

Steadycom P/L: premium rate 25c/20 secs.

This number gives 24-hour access, 365 days a year, for a range of important economic statistics including the CPI.

Internet

<http://www.abs.gov.au>

A wide range of ABS information is available via the Internet, with basic statistics available for each State, Territory and Australia. We also have Key National Indicators, ABS product release details and other information of general interest.

Sales and Inquiries

Keylink STAT.INFO/ABS
X.400 (C:Australia,PUB:Telememo,O:ABS,FN:STAT,SN:INFO)
Internet stat.info@abs.telememo.au

National Mail Order Service (06) 252 5249
Subscription Service 1800 02 0608

	Information Inquiries	Bookshop Sales
SYDNEY	(02) 9268 4611	(02) 9268 4620
MELBOURNE	(03) 9615 7755	(03) 9615 7755
BRISBANE	(07) 3222 6351	(07) 3222 6350
PERTH	(09) 360 5140	(09) 360 5307
ADELAIDE	(08) 8237 7100	(08) 8237 7582
CANBERRA	(06) 252 6627	(06) 207 0326
HOBART	(03) 6222 5800	(03) 6222 5800
DARWIN	(08) 8943 2111	(08) 8943 2111



Client Services, ABS, PO Box 10, Belconnen ACT 2616

© Commonwealth of Australia 1997

Recommended retail price: \$17.50



2130740004971
ISSN 1039-8880